

Datasheet for ABIN635297
anti-ATP1B1 antibody (N-Term)



[Go to Product page](#)

1 Image

Overview

Quantity:	100 µL
Target:	ATP1B1
Binding Specificity:	N-Term
Reactivity:	Human
Host:	Rabbit
Clonality:	Polyclonal
Conjugate:	This ATP1B1 antibody is un-conjugated
Application:	Western Blotting (WB)

Product Details

Immunogen:	ATP1 B1 antibody was raised using the N terminal of ATP1 1 corresponding to a region with amino acids RVAPPGLTQIPQIQKTEISFRPNPKSYEAYVLNIVRFLEKYKDSAQRDD
Specificity:	ATP1 B1 antibody was raised against the N terminal of ATP1 1
Purification:	Affinity purified

Target Details

Target:	ATP1B1
Alternative Name:	ATP1B1 (ATP1B1 Products)
Background:	ATP1B1 belongs to the family of Na ⁺ /K ⁺ and H ⁺ /K ⁺ ATPases beta chain proteins, and to the subfamily of Na ⁺ /K ⁺ -ATPases.

Target Details

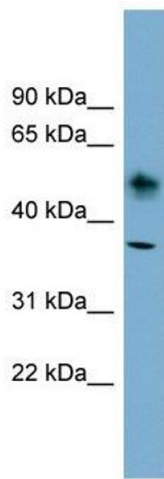
Molecular Weight:	35 kDa (MW of target protein)
Pathways:	Thyroid Hormone Synthesis , Ribonucleoside Biosynthetic Process , SARS-CoV-2 Protein Interactome

Application Details

Application Notes:	WB: 1 µg/mL Optimal conditions should be determined by the investigator.
Comment:	ATP1B1 Blocking Peptide, catalog no. 33R-8238, is also available for use as a blocking control in assays to test for specificity of this ATP1B1 antibody
Restrictions:	For Research Use only

Handling

Format:	Lyophilized
Reconstitution:	Lyophilized powder. Add distilled water for a 1 mg/mL concentration of ATP0 1 antibody in PBS
Concentration:	Lot specific
Buffer:	PBS
Handling Advice:	Avoid repeated freeze/thaw cycles. Dilute only prior to immediate use.
Storage:	4 °C/-20 °C
Storage Comment:	Store at 2-8 °C for short periods. For longer periods of storage, store at -20 °C.



Western Blotting

Image 1. ATP1B1 antibody used at 1 ug/ml to detect target protein.