

Datasheet for ABIN635311 **anti-FAR2 antibody (C-Term)**



[Go to Product page](#)

1 Image

Overview

Quantity:	100 µL
Target:	FAR2
Binding Specificity:	C-Term
Reactivity:	Human, Mouse, Rat
Host:	Rabbit
Clonality:	Polyclonal
Conjugate:	This FAR2 antibody is un-conjugated
Application:	Western Blotting (WB)

Product Details

Immunogen:	MLSTD1 antibody was raised using the C terminal Of Mlstd1 corresponding to a region with amino acids WSTYNTEMLMSELSPEDQRFVNFDFVRQLNWLEYIENYVLGVKKYLLKEDM
Specificity:	MLSTD1 antibody was raised against the C terminal Of Mlstd1
Purification:	Affinity purified

Target Details

Target:	FAR2
Alternative Name:	MLSTD1 (FAR2 Products)
Background:	MLSTD1 catalyzes the reduction of fatty acyl-CoA to fatty alcohols. The preferred substrates are C16, C18, C18:1 and C18:2 but low activity can be observed with C10-C14 substrates.

Target Details

Molecular Weight: 59 kDa (MW of target protein)

Pathways: [SARS-CoV-2 Protein Interactome](#)

Application Details

Application Notes: WB: 1 µg/mL
Optimal conditions should be determined by the investigator.

Comment: MLSTD1 Blocking Peptide, catalog no. 33R-10019, is also available for use as a blocking control in assays to test for specificity of this MLSTD1 antibody

Restrictions: For Research Use only

Handling

Format: Lyophilized

Reconstitution: Lyophilized powder. Add distilled water for a 1 mg/mL concentration of MLSTD1 antibody in PBS

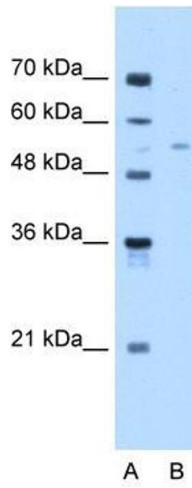
Concentration: Lot specific

Buffer: PBS

Handling Advice: Avoid repeated freeze/thaw cycles.
Dilute only prior to immediate use.

Storage: 4 °C/-20 °C

Storage Comment: Store at 2-8 °C for short periods. For longer periods of storage, store at -20 °C.



Western Blotting

Image 1. MLSTD1 antibody used at 1 ug/ml to detect target protein.