

Datasheet for ABIN635333
anti-TM4SF20 antibody (Middle Region)



[Go to Product page](#)

1 Image

Overview

Quantity:	100 µL
Target:	TM4SF20
Binding Specificity:	Middle Region
Reactivity:	Human
Host:	Rabbit
Clonality:	Polyclonal
Conjugate:	This TM4SF20 antibody is un-conjugated
Application:	Western Blotting (WB)

Product Details

Immunogen:	TM4 SF20 antibody was raised using the middle region of TM4 F20 corresponding to a region with amino acids QALLKGPLMCNSPNSNANCEFSLKNISDIHPESFNLQWFFNDSCAPPTG
Specificity:	TM4 SF20 antibody was raised against the middle region of TM4 F20
Purification:	Affinity purified

Target Details

Target:	TM4SF20
Alternative Name:	TM4SF20 (TM4SF20 Products)
Background:	TM4SF20 functions as a cellular component of the plasma membrane.
Molecular Weight:	25 kDa (MW of target protein)

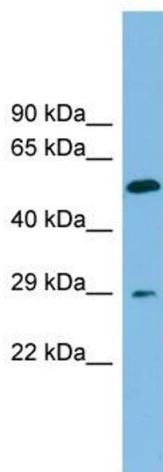
Application Details

Application Notes:	WB: 1 µg/mL Optimal conditions should be determined by the investigator.
Comment:	TM4SF20 Blocking Peptide, catalog no. 33R-7465, is also available for use as a blocking control in assays to test for specificity of this TM4SF20 antibody
Restrictions:	For Research Use only

Handling

Format:	Lyophilized
Reconstitution:	Lyophilized powder. Add distilled water for a 1 mg/mL concentration of TM0 F20 antibody in PBS
Concentration:	Lot specific
Buffer:	PBS
Handling Advice:	Avoid repeated freeze/thaw cycles. Dilute only prior to immediate use.
Storage:	4 °C/-20 °C
Storage Comment:	Store at 2-8 °C for short periods. For longer periods of storage, store at -20 °C.

Images



Western Blotting

Image 1. TM4SF20 antibody used at 1 ug/ml to detect target protein.