

Datasheet for ABIN635337
anti-SLC22A10 antibody (Middle Region)



[Go to Product page](#)

1 Image

Overview

Quantity:	100 µL
Target:	SLC22A10
Binding Specificity:	Middle Region
Reactivity:	Human
Host:	Rabbit
Clonality:	Polyclonal
Conjugate:	This SLC22A10 antibody is un-conjugated
Application:	Western Blotting (WB)

Product Details

Immunogen:	SLC22 A10 antibody was raised using the middle region of SLC22 10 corresponding to a region with amino acids QTLRVALACLGIGCSAATFSSVAVHFIELIPTVLRARASGIDLTASRIGA
Specificity:	SLC22 A10 antibody was raised against the middle region of SLC22 10
Purification:	Affinity purified

Target Details

Target:	SLC22A10
Alternative Name:	SLC22A10 (SLC22A10 Products)
Background:	SLC22A10 is involved in transporter activity as a solute carrier.
Molecular Weight:	60 kDa (MW of target protein)

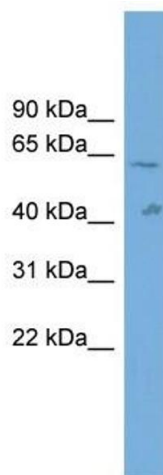
Application Details

Application Notes:	WB: 1 µg/mL Optimal conditions should be determined by the investigator.
Comment:	SLC22A10 Blocking Peptide, catalog no. 33R-7758, is also available for use as a blocking control in assays to test for specificity of this SLC22A10 antibody
Restrictions:	For Research Use only

Handling

Format:	Lyophilized
Reconstitution:	Lyophilized powder. Add distilled water for a 1 mg/mL concentration of SLC20 10 antibody in PBS
Concentration:	Lot specific
Buffer:	PBS
Handling Advice:	Avoid repeated freeze/thaw cycles. Dilute only prior to immediate use.
Storage:	4 °C/-20 °C
Storage Comment:	Store at 2-8 °C for short periods. For longer periods of storage, store at -20 °C.

Images



Western Blotting

Image 1. SLC22A10 antibody used at 1 ug/ml to detect target protein.