

Datasheet for ABIN635340
anti-ENPP2 antibody (N-Term)



[Go to Product page](#)

1 Image

Overview

Quantity:	100 µL
Target:	ENPP2
Binding Specificity:	N-Term
Reactivity:	Human
Host:	Rabbit
Clonality:	Polyclonal
Conjugate:	This ENPP2 antibody is un-conjugated
Application:	Western Blotting (WB)

Product Details

Immunogen:	ENPP2 antibody was raised using the N terminal of ENPP2 corresponding to a region with amino acids YTLATGLYPESHGIVGNSMYDPVFDATFHLRGREKFNHRWWGGQPLWITA
Specificity:	ENPP2 antibody was raised against the N terminal of ENPP2
Purification:	Affinity purified

Target Details

Target:	ENPP2
Alternative Name:	ENPP2 (ENPP2 Products)
Background:	The protein encoded by this gene functions as both a phosphodiesterase, which cleaves phosphodiester bonds at the 5' end of oligonucleotides, and a phospholipase, which catalyzes production of lysophosphatidic acid (LPA) in extracellular fluids. LPA evokes growth factor-like

Target Details

responses including stimulation of cell proliferation and chemotaxis. This gene product stimulates the motility of tumor cells and has angiogenic properties, and its expression is upregulated in several kinds of carcinomas.

Molecular Weight: 95 kDa (MW of target protein)

Application Details

Application Notes: WB: 1 µg/mL
Optimal conditions should be determined by the investigator.

Comment: ENPP2 Blocking Peptide, catalog no. 33R-10264, is also available for use as a blocking control in assays to test for specificity of this ENPP2 antibody

Restrictions: For Research Use only

Handling

Format: Lyophilized

Reconstitution: Lyophilized powder. Add distilled water for a 1 mg/mL concentration of ENPP2 antibody in PBS

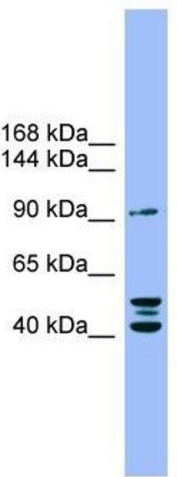
Concentration: Lot specific

Buffer: PBS

Handling Advice: Avoid repeated freeze/thaw cycles.
Dilute only prior to immediate use.

Storage: 4 °C/-20 °C

Storage Comment: Store at 2-8 °C for short periods. For longer periods of storage, store at -20 °C.



Western Blotting

Image 1. ENPP2 antibody used at 1 ug/ml to detect target protein.