

## Datasheet for ABIN635347 **anti-OR6C68 antibody (N-Term)**



[Go to Product page](#)

### 1 Image

#### Overview

Quantity:	100 µL
Target:	OR6C68
Binding Specificity:	N-Term
Reactivity:	Human
Host:	Rabbit
Clonality:	Polyclonal
Conjugate:	This OR6C68 antibody is un-conjugated
Application:	Western Blotting (WB)

#### Product Details

Immunogen:	OR6 C68 antibody was raised using the N terminal of OR6 68 corresponding to a region with amino acids MQKSVMRKHTAITTFILLGLTEDPQLQVLLFMFLFITYMLSVTGKLTIIA
Specificity:	OR6 C68 antibody was raised against the N terminal of OR6 68
Purification:	Affinity purified

#### Target Details

Target:	OR6C68
Alternative Name:	OR6C68 ( <a href="#">OR6C68 Products</a> )
Background:	Olfactory receptors interact with odorant molecules in the nose, to initiate a neuronal response that triggers the perception of a smell. The olfactory receptor proteins are members of a large family of G-protein-coupled receptors (GPCR) arising from single coding-exon genes. Olfactory

## Target Details

---

receptors share a 7-transmembrane domain structure with many neurotransmitter and hormone receptors and are responsible for the recognition and G protein-mediated transduction of odorant signals. The olfactory receptor gene family is the largest in the genome. The nomenclature assigned to the olfactory receptor genes and proteins for this organism is independent of other organisms.

Molecular Weight: 36 kDa (MW of target protein)

## Application Details

---

Application Notes: WB: 1 µg/mL  
Optimal conditions should be determined by the investigator.

Comment: OR6C68 Blocking Peptide, catalog no. 33R-6330, is also available for use as a blocking control in assays to test for specificity of this OR6C68 antibody

Restrictions: For Research Use only

## Handling

---

Format: Lyophilized

Reconstitution: Lyophilized powder. Add distilled water for a 1 mg/mL concentration of OR0 68 antibody in PBS

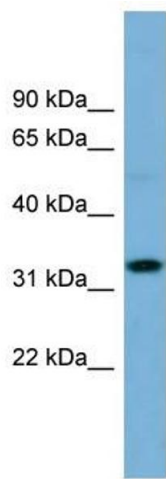
Concentration: Lot specific

Buffer: PBS

Handling Advice: Avoid repeated freeze/thaw cycles.  
Dilute only prior to immediate use.

Storage: 4 °C/-20 °C

Storage Comment: Store at 2-8 °C for short periods. For longer periods of storage, store at -20 °C.



### Western Blotting

**Image 1.** OR6C68 antibody used at 1 ug/ml to detect target protein.