

## Datasheet for ABIN635354 **anti-AWAT1 antibody (N-Term)**



[Go to Product page](#)

### 1 Image

#### Overview

Quantity:	100 µL
Target:	AWAT1
Binding Specificity:	N-Term
Reactivity:	Human
Host:	Rabbit
Clonality:	Polyclonal
Conjugate:	This AWAT1 antibody is un-conjugated
Application:	Western Blotting (WB)

#### Product Details

Immunogen:	AWAT1 antibody was raised using the N terminal of AWAT1 corresponding to a region with amino acids NWCVWTHIRDYFPITILKTKDLSPEHNYLMGVHPHGLLTFGAFCNFCTEA
Specificity:	AWAT1 antibody was raised against the N terminal of AWAT1
Purification:	Affinity purified

#### Target Details

Target:	AWAT1
Alternative Name:	AWAT1 ( <a href="#">AWAT1 Products</a> )
Background:	The protein encoded by this gene belongs to the diacylglycerol acyltransferase family. It esterifies long chain (wax) alcohols with acyl-CoA-derived fatty acids to produce wax esters. Wax esters are enriched in sebum, suggesting that this enzyme plays a central role in lipid

## Target Details

---

metabolism in skin. Consistent with this observation, this protein is predominantly expressed in the sebaceous gland of the skin.

Molecular Weight: 38 kDa (MW of target protein)

## Application Details

---

Application Notes: WB: 1 µg/mL  
Optimal conditions should be determined by the investigator.

Comment: AWAT1 Blocking Peptide, catalog no. 33R-6931, is also available for use as a blocking control in assays to test for specificity of this AWAT1 antibody

Restrictions: For Research Use only

## Handling

---

Format: Lyophilized

Reconstitution: Lyophilized powder. Add distilled water for a 1 mg/mL concentration of AWAT1 antibody in PBS

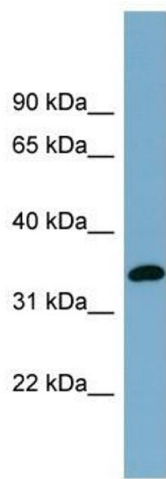
Concentration: Lot specific

Buffer: PBS

Handling Advice: Avoid repeated freeze/thaw cycles.  
Dilute only prior to immediate use.

Storage: 4 °C/-20 °C

Storage Comment: Store at 2-8 °C for short periods. For longer periods of storage, store at -20 °C.



### Western Blotting

**Image 1.** AWAT1 antibody used at 1 ug/ml to detect target protein.