

Datasheet for ABIN635356 **anti-ATP1B4 antibody**

1 Image



[Go to Product page](#)

Overview

Quantity:	100 µL
Target:	ATP1B4
Reactivity:	Human
Host:	Rabbit
Clonality:	Polyclonal
Conjugate:	This ATP1B4 antibody is un-conjugated
Application:	Western Blotting (WB)

Product Details

Immunogen:	ATP1 B4 antibody was raised using a synthetic peptide corresponding to a region with amino acids ACQFKRSFLKNCSGLEDPTFGYSTGQPCILLKMNRIWGFRPELGDPVKVS
Purification:	Affinity purified

Target Details

Target:	ATP1B4
Alternative Name:	ATP1B4 (ATP1B4 Products)
Background:	This gene has been found in all vertebrate genomes sequenced to date. However, this gene has undergone a change in function in placental mammals compared to other species. Specifically, in fish, avian, and amphibian species, this gene encodes plasma membrane-bound beta-subunits of Na,K-ATPase. In placental mammals, the encoded protein interacts with the nuclear transcriptional coregulator SKIP and may be involved in the regulation of TGF-beta signaling.

Target Details

Two transcript variants encoding different isoforms have been found for this gene.

Molecular Weight: 41 kDa (MW of target protein)

Pathways: [Thyroid Hormone Synthesis](#), [Proton Transport](#)

Application Details

Application Notes: WB: 1 µg/mL

Optimal conditions should be determined by the investigator.

Comment: ATP1B4 Blocking Peptide, catalog no. 33R-1078, is also available for use as a blocking control in assays to test for specificity of this ATP1B4 antibody

Restrictions: For Research Use only

Handling

Format: Lyophilized

Reconstitution: Lyophilized powder. Add distilled water for a 1 mg/mL concentration of ATP0 4 antibody in PBS

Concentration: Lot specific

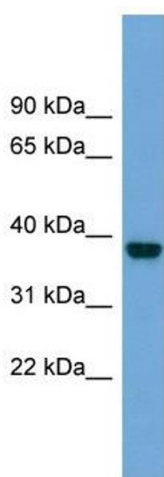
Buffer: PBS

Handling Advice: Avoid repeated freeze/thaw cycles.

Storage: 4 °C/-20 °C

Storage Comment: Store at 2-8 °C for short periods. For longer periods of storage, store at -20 °C.

Images



Western Blotting

Image 1. ATP1B4 antibody used at 1 µg/ml to detect target protein.