

Datasheet for ABIN635372
anti-SLC17A4 antibody



[Go to Product page](#)

2 Images

Overview

Quantity:	100 µL
Target:	SLC17A4
Reactivity:	Human, Mouse, Rat
Host:	Rabbit
Clonality:	Polyclonal
Conjugate:	This SLC17A4 antibody is un-conjugated
Application:	Western Blotting (WB), Immunohistochemistry (IHC)

Product Details

Immunogen:	SLC17 A4 antibody was raised using a synthetic peptide corresponding to a region with amino acids YFCEYWLFYTIMAYTPTYISSVLQANLRDSGILSALPFVVGICICILGGL
Purification:	Affinity purified

Target Details

Target:	SLC17A4
Alternative Name:	SLC17A4 (SLC17A4 Products)
Background:	As a Na/PO4 cotransporter, SLC17A4 may be important to the regulation of Li transport and its therapeutic effects.
Molecular Weight:	55 kDa (MW of target protein)

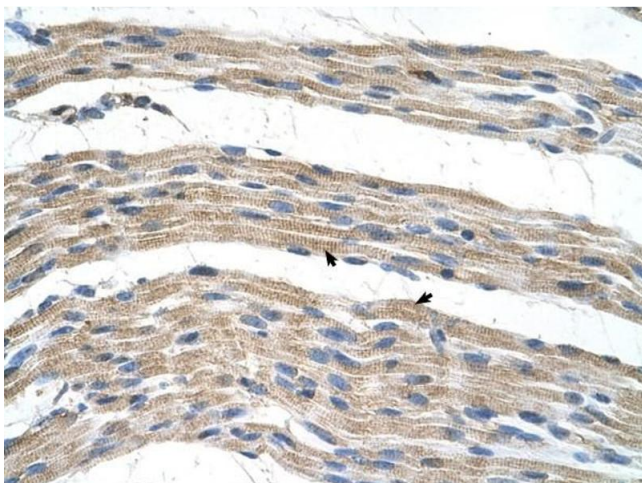
Application Details

Application Notes:	WB: 1 µg/mL, IHC: 4-8 µg/mL Optimal conditions should be determined by the investigator.
Comment:	SLC17A4 Blocking Peptide, catalog no. 33R-10092, is also available for use as a blocking control in assays to test for specificity of this SLC17A4 antibody
Restrictions:	For Research Use only

Handling

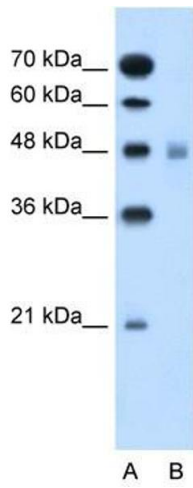
Format:	Lyophilized
Reconstitution:	Lyophilized powder. Add distilled water for a 1 mg/mL concentration of SLC10 4 antibody in PBS
Concentration:	Lot specific
Buffer:	PBS
Handling Advice:	Avoid repeated freeze/thaw cycles.
Storage:	4 °C/-20 °C
Storage Comment:	Store at 2-8 °C for short periods. For longer periods of storage, store at -20 °C.

Images



Immunohistochemistry

Image 1. SLC17A4 antibody was used for immunohistochemistry at a concentration of 4-8 µg/ml to stain Skeletal muscle cells (arrows) in Human Muscle. Magnification is at 400X



Western Blotting

Image 2. SLC17A4 antibody used at 1 ug/ml to detect target protein.