

Datasheet for ABIN635380
anti-SLC35F3 antibody (Middle Region)



[Go to Product page](#)

1 Image

Overview

Quantity:	100 µL
Target:	SLC35F3
Binding Specificity:	Middle Region
Reactivity:	Mouse, Human, Rat
Host:	Rabbit
Clonality:	Polyclonal
Conjugate:	This SLC35F3 antibody is un-conjugated
Application:	Western Blotting (WB)

Product Details

Immunogen:	SLC35 F3 antibody was raised using the middle region of SLC35 3 corresponding to a region with amino acids LKVFFTKAAPFGVLWTLTNYLYLHAIKKINTTDVSVLFCCNKAFVFLLSW
Specificity:	SLC35 F3 antibody was raised against the middle region of SLC35 3
Purification:	Affinity purified

Target Details

Target:	SLC35F3
Alternative Name:	SLC35F3 (SLC35F3 Products)
Background:	SLC35F3 is a multi-pass membrane proteinPotential. It belongs to the SLC35F solute transporter family. SLC35F3 is a putative solute transporter.

Target Details

Molecular Weight: 55 kDa (MW of target protein)

Application Details

Application Notes: WB: 1 µg/mL
Optimal conditions should be determined by the investigator.

Comment: SLC35F3 Blocking Peptide, catalog no. 33R-5111, is also available for use as a blocking control in assays to test for specificity of this SLC35F3 antibody

Restrictions: For Research Use only

Handling

Format: Lyophilized

Reconstitution: Lyophilized powder. Add distilled water for a 1 mg/mL concentration of SLC30 3 antibody in PBS

Concentration: Lot specific

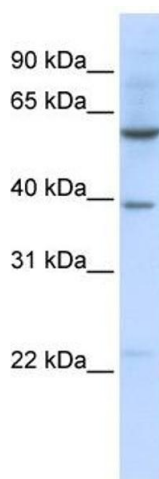
Buffer: PBS

Handling Advice: Avoid repeated freeze/thaw cycles.
Dilute only prior to immediate use.

Storage: 4 °C/-20 °C

Storage Comment: Store at 2-8 °C for short periods. For longer periods of storage, store at -20 °C.

Images



Western Blotting

Image 1. SLC35F3 antibody used at 1 ug/ml to detect target protein.