

## Datasheet for ABIN635388 **anti-TTYH1 antibody**



[Go to Product page](#)

### 1 Image

#### Overview

Quantity:	100 µL
Target:	TTYH1
Reactivity:	Human, Mouse, Rat
Host:	Rabbit
Clonality:	Polyclonal
Conjugate:	This TTYH1 antibody is un-conjugated
Application:	Western Blotting (WB)

#### Product Details

Immunogen:	TTYH1 antibody was raised using a synthetic peptide corresponding to a region with amino acids GAPPGYRPSAWVHLLHQLPRADFQLRPVPSVFAPQEYEQALLLVAALA
Purification:	Affinity purified

#### Target Details

Target:	TTYH1
Alternative Name:	TTYH1 ( <a href="#">TTYH1 Products</a> )
Background:	TTYH1 is a member of the tweety family of proteins. Members of this family function as chloride anion channels. TTYH1 functions as a calcium (2+)-independent, volume-sensitive large conductance chloride (-) channel. This gene encodes a member of the tweety family of proteins. Members of this family function as chloride anion channels. The encoded protein functions as a calcium(2+)-independent, volume-sensitive large conductance chloride(-)

## Target Details

channel. Two transcript variants encoding distinct isoforms have been identified for this gene.

Molecular Weight: 49 kDa (MW of target protein)

## Application Details

Application Notes: WB: 1 µg/mL

Optimal conditions should be determined by the investigator.

Comment: TTYH1 Blocking Peptide, catalog no. 33R-3168, is also available for use as a blocking control in assays to test for specificity of this TTYH1 antibody

Restrictions: For Research Use only

## Handling

Format: Lyophilized

Reconstitution: Lyophilized powder. Add distilled water for a 1 mg/mL concentration of TTYH1 antibody in PBS

Concentration: Lot specific

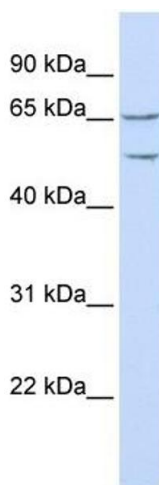
Buffer: PBS

Handling Advice: Avoid repeated freeze/thaw cycles.

Storage: 4 °C/-20 °C

Storage Comment: Store at 2-8 °C for short periods. For longer periods of storage, store at -20 °C.

## Images



### Western Blotting

**Image 1.** TTYH1 antibody used at 1 µg/ml to detect target protein.