

Datasheet for ABIN635389  
**anti-Podoplanin antibody (N-Term)**



[Go to Product page](#)

2 Images

## Overview

Quantity:	100 µL
Target:	Podoplanin (PDPN)
Binding Specificity:	N-Term
Reactivity:	Human
Host:	Rabbit
Clonality:	Polyclonal
Conjugate:	This Podoplanin antibody is un-conjugated
Application:	Western Blotting (WB), Immunohistochemistry (IHC)

## Product Details

Immunogen:	Podoplanin antibody was raised using the N terminal of PDPN corresponding to a region with amino acids EGASTGQPEDDTETTGLEGGVAMPGAEDDVVTPGTSEDRYKSLTTLVAT
Specificity:	Podoplanin antibody was raised against the N terminal of PDPN
Purification:	Affinity purified

## Target Details

Target:	Podoplanin (PDPN)
Alternative Name:	Podoplanin ( <a href="#">PDPN Products</a> )
Background:	PDPN is a type-I integral membrane glycoprotein with diverse distribution in human tissues. The physiological function of this protein may be related to its mucin-type character. The homologous protein in other species has been described as a differentiation antigen and

## Target Details

---

influenza-virus receptor. The specific function of this protein has not been determined but it has been proposed as a marker of lung injury.

Molecular Weight: 25 kDa (MW of target protein)

Pathways: [Dicarboxylic Acid Transport](#)

## Application Details

---

Application Notes: WB: 0.25 µg/mL, IHC: 4-8 µg/mL  
Optimal conditions should be determined by the investigator.

Comment: Podoplanin Blocking Peptide, catalog no. 33R-2420, is also available for use as a blocking control in assays to test for specificity of this Podoplanin antibody

Restrictions: For Research Use only

## Handling

---

Format: Lyophilized

Reconstitution: Lyophilized powder. Add distilled water for a 1 mg/mL concentration of PDPN antibody in PBS

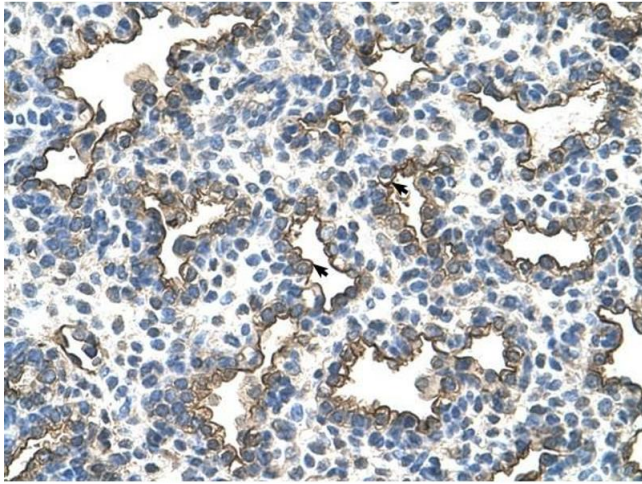
Concentration: Lot specific

Buffer: PBS

Handling Advice: Avoid repeated freeze/thaw cycles.  
Dilute only prior to immediate use.

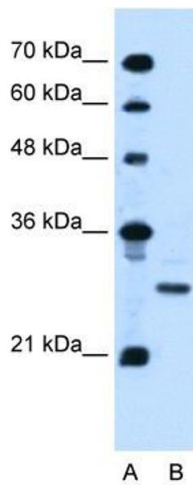
Storage: 4 °C/-20 °C

Storage Comment: Store at 2-8 °C for short periods. For longer periods of storage, store at -20 °C.



### Immunohistochemistry

**Image 1.** Podoplanin antibody was used for immunohistochemistry at a concentration of 4-8 ug/ml to stain Alveolar cells (arrows) in Human Lung. Magnification is at 400X



### Western Blotting

**Image 2.** Podoplanin antibody used at 0.25 ug/ml to detect target protein.