

Datasheet for ABIN635410 **anti-YIF1B antibody**



[Go to Product page](#)

1 Image

Overview

Quantity:	100 µL
Target:	YIF1B
Reactivity:	Human, Rat, Mouse
Host:	Rabbit
Clonality:	Polyclonal
Conjugate:	This YIF1B antibody is un-conjugated
Application:	Western Blotting (WB)

Product Details

Immunogen:	YIF1 B antibody was raised using a synthetic peptide corresponding to a region with amino acids LGTQDRFSPDLLGLQASSALAWLTLEVLAILLSLYLVTVNTDLTTIDLVA
Purification:	Affinity purified

Target Details

Target:	YIF1B
Alternative Name:	YIF1B (YIF1B Products)
Background:	YIF1B belongs to the YIF1 family. It is a multi-pass membrane protein. The functions of YIF1B remain unknown.
Molecular Weight:	31 kDa (MW of target protein)

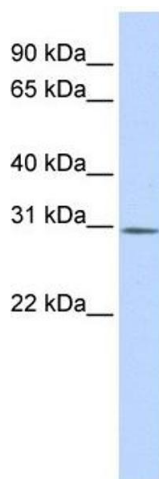
Application Details

Application Notes:	WB: 1 µg/mL Optimal conditions should be determined by the investigator.
Comment:	YIF1B Blocking Peptide, catalog no. 33R-4998, is also available for use as a blocking control in assays to test for specificity of this YIF1B antibody
Restrictions:	For Research Use only

Handling

Format:	Lyophilized
Reconstitution:	Lyophilized powder. Add distilled water for a 1 mg/mL concentration of YIF0 antibody in PBS
Concentration:	Lot specific
Buffer:	PBS
Handling Advice:	Avoid repeated freeze/thaw cycles.
Storage:	4 °C/-20 °C
Storage Comment:	Store at 2-8 °C for short periods. For longer periods of storage, store at -20 °C.

Images



Western Blotting

Image 1. YIF1B antibody used at 1 ug/ml to detect target protein.