

## Datasheet for ABIN635416 **anti-KLRC3 antibody (N-Term)**



[Go to Product page](#)

### 1 Image

#### Overview

Quantity:	100 µL
Target:	KLRC3
Binding Specificity:	N-Term
Reactivity:	Human
Host:	Rabbit
Clonality:	Polyclonal
Conjugate:	This KLRC3 antibody is un-conjugated
Application:	Western Blotting (WB)

#### Product Details

Immunogen:	KLRC3 antibody was raised using the N terminal of KLRC3 corresponding to a region with amino acids MSKQRGTFSEVSLAQDPKWQQRKPKGNKSSISGTEQEIFQVELNLQNASL
Specificity:	KLRC3 antibody was raised against the N terminal of KLRC3
Purification:	Affinity purified

#### Target Details

Target:	KLRC3
Alternative Name:	KLRC3 ( <a href="#">KLRC3 Products</a> )
Background:	Natural killer (NK) cells are lymphocytes that can mediate lysis of certain tumor cells and virus-infected cells without previous activation. They can also regulate specific humoral and cell-mediated immunity.

## Target Details

---

Molecular Weight: 27 kDa (MW of target protein)

## Application Details

---

Application Notes: WB: 1 µg/mL  
Optimal conditions should be determined by the investigator.

Comment: KLRC3 Blocking Peptide, catalog no. 33R-6452, is also available for use as a blocking control in assays to test for specificity of this KLRC3 antibody

Restrictions: For Research Use only

## Handling

---

Format: Lyophilized

Reconstitution: Lyophilized powder. Add distilled water for a 1 mg/mL concentration of KLRC3 antibody in PBS

Concentration: Lot specific

Buffer: PBS

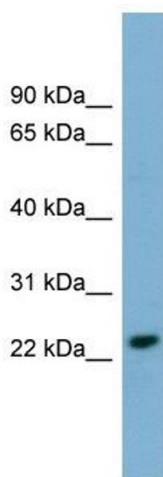
Handling Advice: Avoid repeated freeze/thaw cycles.  
Dilute only prior to immediate use.

Storage: 4 °C/-20 °C

Storage Comment: Store at 2-8 °C for short periods. For longer periods of storage, store at -20 °C.

## Images

---



### Western Blotting

**Image 1.** KLRC3 antibody used at 1 ug/ml to detect target protein.