

Datasheet for ABIN635422
anti-ITGA8 antibody (N-Term)



[Go to Product page](#)

1 Image

Overview

Quantity:	100 µL
Target:	ITGA8
Binding Specificity:	N-Term
Reactivity:	Human
Host:	Rabbit
Clonality:	Polyclonal
Conjugate:	This ITGA8 antibody is un-conjugated
Application:	Western Blotting (WB)

Product Details

Immunogen:	Integrin Alpha 8 antibody was raised using the N terminal of ITGA8 corresponding to a region with amino acids GEKQTEVAPASYDDSYLGYSVAAGEFTGDSQQELVAGIPRGAQNFGYVSI
Specificity:	Integrin Alpha 8 antibody was raised against the N terminal of ITGA8
Purification:	Affinity purified

Target Details

Target:	ITGA8
Alternative Name:	Integrin alpha 8 (ITGA8 Products)
Background:	Integrin alpha-8/beta-1 functions in the genesis of kidney and probably of other organs by regulating the recruitment of mesenchymal cells into epithelial structures.

Target Details

Molecular Weight: 117 kDa (MW of target protein)

Application Details

Application Notes: WB: 1 µg/mL
Optimal conditions should be determined by the investigator.

Comment: Integrin Alpha 8 Blocking Peptide, catalog no. 33R-3233, is also available for use as a blocking control in assays to test for specificity of this Integrin Alpha 8 antibody

Restrictions: For Research Use only

Handling

Format: Lyophilized

Reconstitution: Lyophilized powder. Add distilled water for a 1 mg/mL concentration of ITGA8 antibody in PBS

Concentration: Lot specific

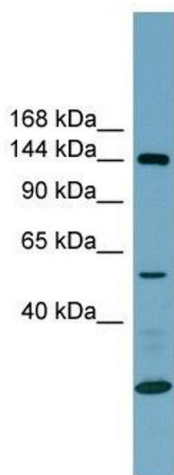
Buffer: PBS

Handling Advice: Avoid repeated freeze/thaw cycles.
Dilute only prior to immediate use.

Storage: 4 °C/-20 °C

Storage Comment: Store at 2-8 °C for short periods. For longer periods of storage, store at -20 °C.

Images



Western Blotting

Image 1. Integrin Alpha 8 antibody used at 1 ug/ml to detect target protein.