

## Datasheet for ABIN635423 **anti-DEGS1 antibody**



[Go to Product page](#)

### 1 Image

#### Overview

Quantity:	100 µL
Target:	DEGS1
Reactivity:	Human, Mouse, Rat
Host:	Rabbit
Clonality:	Polyclonal
Conjugate:	This DEGS1 antibody is un-conjugated
Application:	Western Blotting (WB)

#### Product Details

Immunogen:	DEGS1 antibody was raised using a synthetic peptide corresponding to a region with amino acids GSRVSREDFEWVYTDQPHADRRREILAKYPEIKSLMKPDPNLIWIIIMMV
Purification:	Affinity purified

#### Target Details

Target:	DEGS1
Alternative Name:	DEGS1 ( <a href="#">DEGS1 Products</a> )
Background:	DEGS1 is a member of the membrane fatty acid desaturase family which is responsible for inserting double bonds into specific positions in fatty acids. This protein contains three His-containing consensus motifs that are characteristic of a group of membrane fatty acid desaturases. It is predicted to be a multiple membrane-spanning protein localized to the endoplasmic reticulum. Overexpression of this protein inhibited biosynthesis of the EGF

## Target Details

receptor, suggesting a possible role of a fatty acid desaturase in regulating biosynthetic processing of the EGF receptor.

Molecular Weight: 38 kDa (MW of target protein)

## Application Details

Application Notes: WB: 1 µg/mL  
Optimal conditions should be determined by the investigator.

Comment: DEGS1 Blocking Peptide, catalog no. 33R-3584, is also available for use as a blocking control in assays to test for specificity of this DEGS1 antibody

Restrictions: For Research Use only

## Handling

Format: Lyophilized

Reconstitution: Lyophilized powder. Add distilled water for a 1 mg/mL concentration of DEGS1 antibody in PBS

Concentration: Lot specific

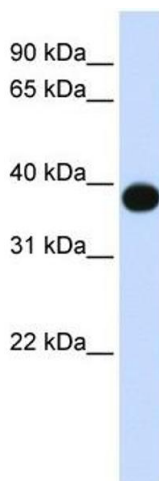
Buffer: PBS

Handling Advice: Avoid repeated freeze/thaw cycles.

Storage: 4 °C/-20 °C

Storage Comment: Store at 2-8 °C for short periods. For longer periods of storage, store at -20 °C.

## Images



### Western Blotting

**Image 1.** DEGS1 antibody used at 1 µg/ml to detect target protein.