

Datasheet for ABIN635427
anti-CHST2 antibody



[Go to Product page](#)

1 Image

Overview

Quantity:	100 µL
Target:	CHST2
Reactivity:	Human, Mouse, Rat
Host:	Rabbit
Clonality:	Polyclonal
Conjugate:	This CHST2 antibody is un-conjugated
Application:	Western Blotting (WB)

Product Details

Immunogen:	CHST2 antibody was raised using a synthetic peptide corresponding to a region with amino acids NAWRTALTFQQIKQVEEFCYQPMVAVLGYERVNSPEEVKDLSKTLRLKPRL
Purification:	Affinity purified

Target Details

Target:	CHST2
Alternative Name:	CHST2 (CHST2 Products)
Background:	N-acetylglucosamine-6-O-sulfotransferases, such as CHST2, catalyze the transfer of sulfate from 3-prime-phosphoadenosine 5-prime-phosphosulfate (PAPS) to position 6 of a nonreducing N-acetylglucosamine (GlcNAc) residue.
Molecular Weight:	58 kDa (MW of target protein)
Pathways:	Glycosaminoglycan Metabolic Process

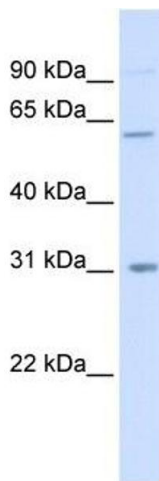
Application Details

Application Notes:	WB: 1 µg/mL Optimal conditions should be determined by the investigator.
Comment:	CHST2 Blocking Peptide, catalog no. 33R-6649, is also available for use as a blocking control in assays to test for specificity of this CHST2 antibody
Restrictions:	For Research Use only

Handling

Format:	Lyophilized
Reconstitution:	Lyophilized powder. Add distilled water for a 1 mg/mL concentration of CHST2 antibody in PBS
Concentration:	Lot specific
Buffer:	PBS
Handling Advice:	Avoid repeated freeze/thaw cycles.
Storage:	4 °C/-20 °C
Storage Comment:	Store at 2-8 °C for short periods. For longer periods of storage, store at -20 °C.

Images



Western Blotting

Image 1. CHST2 antibody used at 1 µg/ml to detect target protein.