

Datasheet for ABIN635428

anti-Golgin B1 (GOLGB1) (N-Term) antibody[Go to Product page](#)**1** Image

Overview

Quantity:	100 µL
Target:	Golgin B1 (GOLGB1)
Binding Specificity:	N-Term
Reactivity:	Human
Host:	Rabbit
Clonality:	Polyclonal
Conjugate:	Un-conjugated
Application:	Western Blotting (WB)

Product Details

Immunogen:	GOLGB1 antibody was raised using the N terminal of GOLGB1 corresponding to a region with amino acids NKYIEEMKAQGGTVLPTEPQSEEQLSKHDKSSTEEEMEIEKIKHKLQEKE
Specificity:	GOLGB1 antibody was raised against the N terminal of GOLGB1
Purification:	Affinity purified

Target Details

Target:	Golgin B1 (GOLGB1)
Alternative Name:	GOLGB1 (GOLGB1 Products)
Background:	GOLGB1 may participate in forming intercisternal cross-bridges of the Golgi complex.
Molecular Weight:	376 kDa (MW of target protein)

Target Details

Pathways: [SARS-CoV-2 Protein Interactome](#)

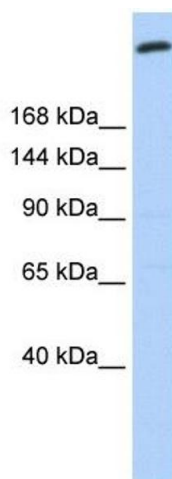
Application Details

Application Notes:	WB: 1 µg/mL Optimal conditions should be determined by the investigator.
Comment:	GOLGB1 Blocking Peptide, catalog no. 33R-6750, is also available for use as a blocking control in assays to test for specificity of this GOLGB1 antibody
Restrictions:	For Research Use only

Handling

Format:	Lyophilized
Reconstitution:	Lyophilized powder. Add distilled water for a 1 mg/mL concentration of GOLGB1 antibody in PBS
Concentration:	Lot specific
Buffer:	PBS
Handling Advice:	Avoid repeated freeze/thaw cycles. Dilute only prior to immediate use.
Storage:	4 °C/-20 °C
Storage Comment:	Store at 2-8 °C for short periods. For longer periods of storage, store at -20 °C.

Images



Western Blotting

Image 1. GOLGB1 antibody used at 1 ug/ml to detect target protein.