

Datasheet for ABIN635436 **anti-CHIC2 antibody (N-Term)**

3 Images



[Go to Product page](#)

Overview

Quantity:	100 µL
Target:	CHIC2
Binding Specificity:	N-Term
Reactivity:	Human, Mouse, Rat, Dog
Host:	Rabbit
Clonality:	Polyclonal
Conjugate:	This CHIC2 antibody is un-conjugated
Application:	Western Blotting (WB), Immunohistochemistry (IHC)

Product Details

Immunogen:	CHIC2 antibody was raised using the N terminal of CHIC2 corresponding to a region with amino acids EEQLLKYSPPVVRGSGHVTVFGLSNKFESEFPSSLTGKVAPEEFKASI
Specificity:	CHIC2 antibody was raised against the N terminal of CHIC2
Purification:	Affinity purified

Target Details

Target:	CHIC2
Alternative Name:	CHIC2 (CHIC2 Products)
Background:	CHIC2 is a member of the CHIC family of proteins. This protein contains a cysteine-rich hydrophobic (CHIC) motif, and is localized to vesicular structures and the plasma membrane. CHIC2 gene is associated with some cases of acute myeloid leukemia.

Target Details

Molecular Weight: 19 kDa (MW of target protein)

Application Details

Application Notes: WB: 0.25 µg/mL, IHC: 4-8 µg/mL
Optimal conditions should be determined by the investigator.

Comment: CHIC2 Blocking Peptide, catalog no. 33R-2382, is also available for use as a blocking control in assays to test for specificity of this CHIC2 antibody

Restrictions: For Research Use only

Handling

Format: Lyophilized

Reconstitution: Lyophilized powder. Add distilled water for a 1 mg/mL concentration of CHIC2 antibody in PBS

Concentration: Lot specific

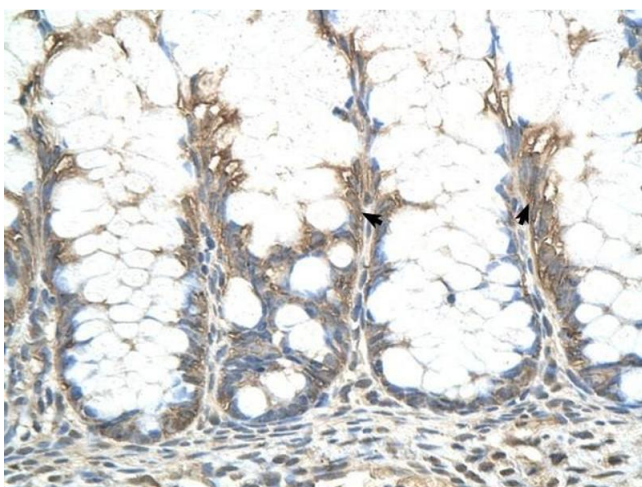
Buffer: PBS

Handling Advice: Avoid repeated freeze/thaw cycles.
Dilute only prior to immediate use.

Storage: 4 °C/-20 °C

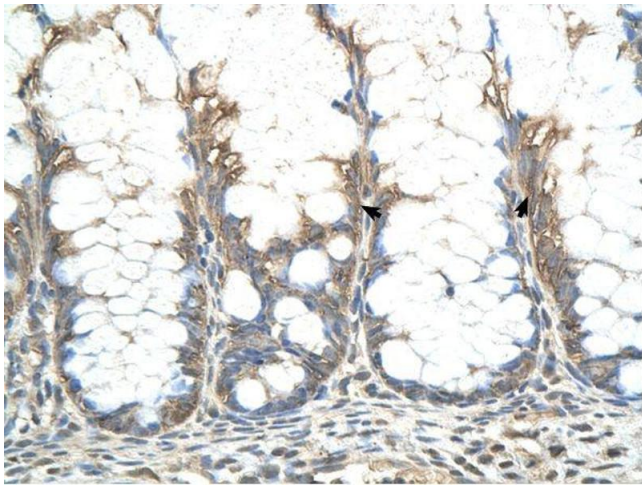
Storage Comment: Store at 2-8 °C for short periods. For longer periods of storage, store at -20 °C.

Images



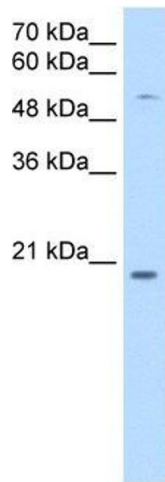
Immunohistochemistry

Image 1. CHIC2 antibody was used for immunohistochemistry at a concentration of 4-8 ug/ml to stain Epithelial cells of intestinal villus (arrows) in Human Intestine. Magnification is at 400X



Immunohistochemistry

Image 2. CHIC2 antibody was used for immunohistochemistry at a concentration of 4-8 ug/ml. Magnification is at 400X



Western Blotting

Image 3. CHIC2 antibody used at 0.25 ug/ml to detect target protein.