

Datasheet for ABIN635440
anti-ST6GALNAC6 antibody (C-Term)



[Go to Product page](#)

1 Image

Overview

Quantity:	100 µL
Target:	ST6GALNAC6
Binding Specificity:	C-Term
Reactivity:	Human, Mouse, Rat
Host:	Rabbit
Clonality:	Polyclonal
Conjugate:	This ST6GALNAC6 antibody is un-conjugated
Application:	Western Blotting (WB)

Product Details

Immunogen:	ST6 GALNAC6 antibody was raised using the C terminal of ST6 ALNAC6 corresponding to a region with amino acids YHYEYEPKGPDECVTYIQNEHSRKGNHHRFITEKRVFSSWAQLYGITFSHP
Specificity:	ST6 GALNAC6 antibody was raised against the C terminal of ST6 ALNAC6
Purification:	Affinity purified

Target Details

Target:	ST6GALNAC6
Alternative Name:	ST6GALNAC6 (ST6GALNAC6 Products)
Background:	ST6GALNAC6 belongs to a family of sialyltransferases that modify proteins and ceramides on the cell surface to alter cell-cell or cell-extracellular matrix interactions. ST6GALNAC6 belongs to a family of sialyltransferases that modify proteins and ceramides on the cell surface to alter

Target Details

cell-cell or cell-extracellular matrix interactions.

Molecular Weight: 38 kDa (MW of target protein)

Application Details

Application Notes: WB: 0.5 µg/mL
Optimal conditions should be determined by the investigator.

Comment: ST6GALNAC6 Blocking Peptide, catalog no. 33R-10129, is also available for use as a blocking control in assays to test for specificity of this ST6GALNAC6 antibody

Restrictions: For Research Use only

Handling

Format: Lyophilized

Reconstitution: Lyophilized powder. Add distilled water for a 1 mg/mL concentration of ST6 GALNAC6 antibody in PBS

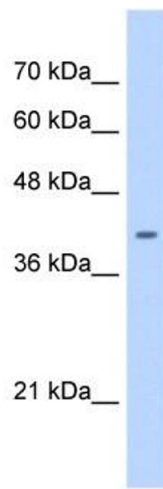
Concentration: Lot specific

Buffer: PBS

Handling Advice: Avoid repeated freeze/thaw cycles.
Dilute only prior to immediate use.

Storage: 4 °C/-20 °C

Storage Comment: Store at 2-8 °C for short periods. For longer periods of storage, store at -20 °C.



Western Blotting

Image 1. ST6GALNAC6 antibody used at 0.5 ug/ml to detect target protein.