

Datasheet for ABIN635443 **anti-ATP11B antibody (N-Term)**



[Go to Product page](#)

1 Image

Overview

Quantity:	100 µL
Target:	ATP11B
Binding Specificity:	N-Term
Reactivity:	Human, Mouse, Rat
Host:	Rabbit
Clonality:	Polyclonal
Conjugate:	This ATP11B antibody is un-conjugated
Application:	Western Blotting (WB)

Product Details

Immunogen:	ATP11 B antibody was raised using the N terminal of ATP11 corresponding to a region with amino acids DIVRIAKDEIFPADLVLLSSDRLDGSHVTTASLDGETNLKTHVAVPETA
Specificity:	ATP11 B antibody was raised against the N terminal of ATP11
Purification:	Affinity purified

Target Details

Target:	ATP11B
Alternative Name:	ATP11B (ATP11B Products)
Background:	P-type ATPases, such as ATP11B, are phosphorylated in their intermediate state and drive uphill transport of ions across membranes. Several subfamilies of P-type ATPases have been identified. One subfamily transports heavy metal ions, such as Cu(2+) or Cd(2+). Another

Target Details

subfamily transports non-heavy metal ions, such as H(+), Na(+), K(+), or Ca(+). A third subfamily transports amphipaths, such as phosphatidylserine. P-type ATPases, such as ATP11B, are phosphorylated in their intermediate state and drive uphill transport of ions across membranes.

Molecular Weight: 134 kDa (MW of target protein)

Application Details

Application Notes: WB: 1 µg/mL
Optimal conditions should be determined by the investigator.

Comment: ATP11B Blocking Peptide, catalog no. 33R-2011, is also available for use as a blocking control in assays to test for specificity of this ATP11B antibody

Restrictions: For Research Use only

Handling

Format: Lyophilized

Reconstitution: Lyophilized powder. Add distilled water for a 1 mg/mL concentration of ATP10 antibody in PBS

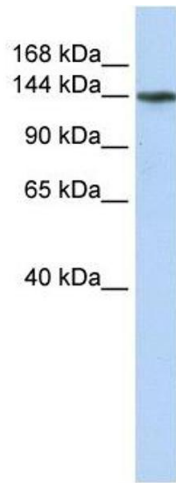
Concentration: Lot specific

Buffer: PBS

Handling Advice: Avoid repeated freeze/thaw cycles.
Dilute only prior to immediate use.

Storage: 4 °C/-20 °C

Storage Comment: Store at 2-8 °C for short periods. For longer periods of storage, store at -20 °C.



Western Blotting

Image 1. ATP11B antibody used at 1 ug/ml to detect target protein.