

## Datasheet for ABIN635444 **anti-EDEM1 antibody (N-Term)**



[Go to Product page](#)

### 1 Image

#### Overview

Quantity:	100 µL
Target:	EDEM1
Binding Specificity:	N-Term
Reactivity:	Human, Mouse
Host:	Rabbit
Clonality:	Polyclonal
Conjugate:	This EDEM1 antibody is un-conjugated
Application:	Western Blotting (WB)

#### Product Details

Immunogen:	EDEM1 antibody was raised using the N terminal of EDEM1 corresponding to a region with amino acids MAHAFPQDELNPIHCRGRGPDRGDPSNLNINDVLGNYSLTLVDALDTLAI
Specificity:	EDEM1 antibody was raised against the N terminal of EDEM1
Purification:	Affinity purified

#### Target Details

Target:	EDEM1
Alternative Name:	EDEM1 ( <a href="#">EDEM1 Products</a> )
Background:	EDEM1 belongs to the glycosyl hydrolase 47 family. It extracts misfolded glycoproteins, but not glycoproteins undergoing productive folding, from the calnexin cycle. It is directly involved in endoplasmic reticulum-associated degradation (ERAD) and targets misfolded glycoproteins for

## Target Details

---

degradation in an N-glycan-dependent manner.

Molecular Weight: 74 kDa (MW of target protein)

Pathways: [ER-Nucleus Signaling](#)

## Application Details

---

Application Notes: WB: 1 µg/mL

Optimal conditions should be determined by the investigator.

Comment: EDEM1 Blocking Peptide, catalog no. 33R-5674, is also available for use as a blocking control in assays to test for specificity of this EDEM1 antibody

Restrictions: For Research Use only

## Handling

---

Format: Lyophilized

Reconstitution: Lyophilized powder. Add distilled water for a 1 mg/mL concentration of EDEM1 antibody in PBS

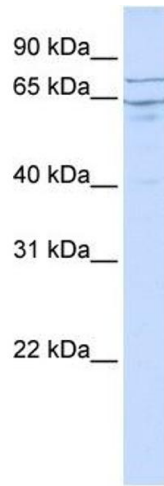
Concentration: Lot specific

Buffer: PBS

Handling Advice: Avoid repeated freeze/thaw cycles.  
Dilute only prior to immediate use.

Storage: 4 °C/-20 °C

Storage Comment: Store at 2-8 °C for short periods. For longer periods of storage, store at -20 °C.



### Western Blotting

**Image 1.** EDEM1 antibody used at 1 ug/ml to detect target protein.