

Datasheet for ABIN635449  
**anti-C19orf56 antibody (N-Term)**



[Go to Product page](#)

1 Image

## Overview

|                      |   |
|----------------------|---|
| Quantity:            | 100 µL                                  |
| Target:              | C19orf56                                |
| Binding Specificity: | N-Term                                  |
| Reactivity:          | Human, Mouse, Rat                       |
| Host:                | Rabbit                                  |
| Clonality:           | Polyclonal                              |
| Conjugate:           | This C19orf56 antibody is un-conjugated |
| Application:         | Western Blotting (WB)                   |

## Product Details

|               |  |
|---------------|--|
| Immunogen:    | C19 ORF56 antibody was raised using the N terminal Of C19 rf56 corresponding to a region with amino acids STNNMSDPRRPNKVLRYPKPPSECNPALDDPTPDYMNLLGMIFSMCGLML |
| Specificity:  | C19 ORF56 antibody was raised against the N terminal Of C19 rf56   |
| Purification: | Affinity purified  |

## Target Details

|                   |  |
|-------------------|--|
| Target:           | C19orf56   |
| Alternative Name: | C19ORF56 ( <a href="#">C19orf56 Products</a> )   |
| Background:       | The function of C19orf56 protein has not been widely studied, and is yet to be fully elucidated. |
| Molecular Weight: | 12 kDa (MW of target protein)  |

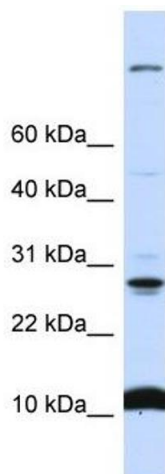
## Application Details

|                    |  |
|--------------------|--|
| Application Notes: | WB: 1 µg/mL<br>Optimal conditions should be determined by the investigator.  |
| Comment:           | C19ORF56 Blocking Peptide, catalog no. 33R-8878, is also available for use as a blocking control in assays to test for specificity of this C19ORF56 antibody |
| Restrictions:      | For Research Use only  |

## Handling

|                  |   |
|------------------|---|
| Format:          | Lyophilized   |
| Reconstitution:  | Lyophilized powder. Add distilled water for a 1 mg/mL concentration of C10 RF56 antibody in PBS |
| Concentration:   | Lot specific  |
| Buffer:          | PBS   |
| Handling Advice: | Avoid repeated freeze/thaw cycles.<br>Dilute only prior to immediate use.                       |
| Storage:         | 4 °C/-20 °C   |
| Storage Comment: | Store at 2-8 °C for short periods. For longer periods of storage, store at -20 °C.              |

## Images



### Western Blotting

**Image 1.** C19ORF56 antibody used at 1 ug/ml to detect target protein.