

Datasheet for ABIN635468 **anti-DOLPP1 antibody (N-Term)**



[Go to Product page](#)

1 Image

Overview

Quantity:	100 µL
Target:	DOLPP1
Binding Specificity:	N-Term
Reactivity:	Mouse, Rat, Human
Host:	Rabbit
Clonality:	Polyclonal
Conjugate:	This DOLPP1 antibody is un-conjugated
Application:	Western Blotting (WB)

Product Details

Immunogen:	DOLPP1 antibody was raised using the N terminal of DOLPP1 corresponding to a region with amino acids AADGQCCLPASWRPVTLTHVEYPAGDLSGHLLAYLSLSPVFVIVGFVTLI
Specificity:	DOLPP1 antibody was raised against the N terminal of DOLPP1
Purification:	Affinity purified

Target Details

Target:	DOLPP1
Alternative Name:	DOLPP1 (DOLPP1 Products)
Background:	DOLPP1 is a multi-pass membrane proteinBy similarity. It belongs to the dolichyldiphosphatase family. It is required for efficient N-glycosylation and is necessary for maintaining optimal levels of dolichol-linked oligosaccharides. DOLPP1 hydrolyzes dolichyl pyrophosphate at a very high

Target Details

rate and dolichyl monophosphate at a much lower rate. It does not act on phosphatidate.

Molecular Weight: 27 kDa (MW of target protein)

Application Details

Application Notes: WB: 1 µg/mL
Optimal conditions should be determined by the investigator.

Comment: DOLPP1 Blocking Peptide, catalog no. 33R-1013, is also available for use as a blocking control in assays to test for specificity of this DOLPP1 antibody

Restrictions: For Research Use only

Handling

Format: Lyophilized

Reconstitution: Lyophilized powder. Add distilled water for a 1 mg/mL concentration of DOLPP1 antibody in PBS

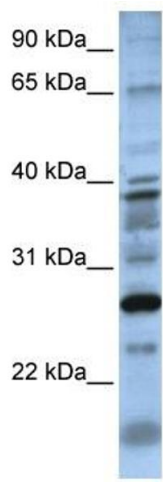
Concentration: Lot specific

Buffer: PBS

Handling Advice: Avoid repeated freeze/thaw cycles.
Dilute only prior to immediate use.

Storage: 4 °C/-20 °C

Storage Comment: Store at 2-8 °C for short periods. For longer periods of storage, store at -20 °C.



Western Blotting

Image 1. DOLPP1 antibody used at 1 ug/ml to detect target protein.