

Datasheet for ABIN635469
anti-ATP10D antibody (C-Term)



[Go to Product page](#)

1 Image

Overview

Quantity:	100 µL
Target:	ATP10D
Binding Specificity:	C-Term
Reactivity:	Human
Host:	Rabbit
Clonality:	Polyclonal
Conjugate:	This ATP10D antibody is un-conjugated
Application:	Western Blotting (WB)

Product Details

Immunogen:	ATP10 D antibody was raised using the C terminal of ATP10 corresponding to a region with amino acids LFTSAPPVIYGVLEKDVSAETLMQLPELYRSGQKSEAYLPHTFWITLLDA
Specificity:	ATP10 D antibody was raised against the C terminal of ATP10
Purification:	Affinity purified

Target Details

Target:	ATP10D
Alternative Name:	ATP10D (ATP10D Products)
Background:	ATP10D is a multi-pass membrane protein. It belongs to the cation transport ATPase (P-type) family, type IV subfamily. The exact function of ATP10D remains unknown.

Target Details

Molecular Weight: 160 kDa (MW of target protein)

Application Details

Application Notes: WB: 1 µg/mL
Optimal conditions should be determined by the investigator.

Comment: ATP10D Blocking Peptide, catalog no. 33R-4952, is also available for use as a blocking control in assays to test for specificity of this ATP10D antibody

Restrictions: For Research Use only

Handling

Format: Lyophilized

Reconstitution: Lyophilized powder. Add distilled water for a 1 mg/mL concentration of ATP10 antibody in PBS

Concentration: Lot specific

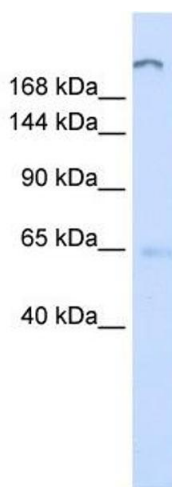
Buffer: PBS

Handling Advice: Avoid repeated freeze/thaw cycles.
Dilute only prior to immediate use.

Storage: 4 °C/-20 °C

Storage Comment: Store at 2-8 °C for short periods. For longer periods of storage, store at -20 °C.

Images



Western Blotting

Image 1. ATP10D antibody used at 1 ug/ml to detect target protein.