

Datasheet for ABIN635475  
**anti-CACHD1 antibody (N-Term)**



[Go to Product page](#)

1 Image

## Overview

Quantity:	100 µL
Target:	CACHD1
Binding Specificity:	N-Term
Reactivity:	Human, Mouse, Rat
Host:	Rabbit
Clonality:	Polyclonal
Conjugate:	This CACHD1 antibody is un-conjugated
Application:	Western Blotting (WB)

## Product Details

Immunogen:	CACHD1 antibody was raised using the N terminal of CACHD1 corresponding to a region with amino acids HKFRCKGSYEHRSRPIYVSTVRPQSKHIVWILDHGASVTDTQLQIAKDAA
Specificity:	CACHD1 antibody was raised against the N terminal of CACHD1
Purification:	Affinity purified

## Target Details

Target:	CACHD1
Alternative Name:	CACHD1 ( <a href="#">CACHD1 Products</a> )
Background:	CACHD1 belongs to the calcium channel subunit alpha-2/delta family. It contains 2 cache domains and 1 VWFA domain. CACHD1 may regulate voltage-dependent calcium channels.

## Target Details

---

Molecular Weight: 137 kDa (MW of target protein)

## Application Details

---

Application Notes: WB: 1 µg/mL  
Optimal conditions should be determined by the investigator.

Comment: CACHD1 Blocking Peptide, catalog no. 33R-3761, is also available for use as a blocking control in assays to test for specificity of this CACHD1 antibody

Restrictions: For Research Use only

## Handling

---

Format: Lyophilized

Reconstitution: Lyophilized powder. Add distilled water for a 1 mg/mL concentration of CACHD1 antibody in PBS

Concentration: Lot specific

Buffer: PBS

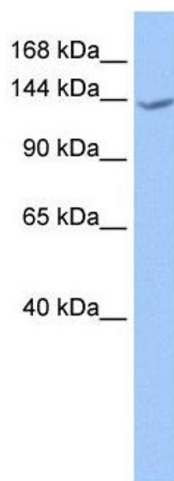
Handling Advice: Avoid repeated freeze/thaw cycles.  
Dilute only prior to immediate use.

Storage: 4 °C/-20 °C

Storage Comment: Store at 2-8 °C for short periods. For longer periods of storage, store at -20 °C.

## Images

---



### Western Blotting

**Image 1.** CACHD1 antibody used at 1 ug/ml to detect target protein.