

Datasheet for ABIN635477  
**anti-CATSPERG antibody (C-Term)**



[Go to Product page](#)

1 Image

## Overview

Quantity:	100 µL
Target:	CATSPERG
Binding Specificity:	C-Term
Reactivity:	Human
Host:	Rabbit
Clonality:	Polyclonal
Conjugate:	This CATSPERG antibody is un-conjugated
Application:	Western Blotting (WB)

## Product Details

Immunogen:	C19 ORF15 antibody was raised using the C terminal Of C19 rf15 corresponding to a region with amino acids FFLIQDLVTGDSGSFQGSYVLLVGGGPTLDSLKDYSEDEIYRFNSPLDK
Specificity:	C19 ORF15 antibody was raised against the C terminal Of C19 rf15
Purification:	Affinity purified

## Target Details

Target:	CATSPERG
Alternative Name:	C19ORF15 ( <a href="#">CATSPERG Products</a> )
Background:	C19orf15 is a single-pass type I membrane protein. The exact function of C19orf15 remains unknown.

## Target Details

---

Molecular Weight: 92 kDa (MW of target protein)

## Application Details

---

Application Notes: WB: 0.5 µg/mL  
Optimal conditions should be determined by the investigator.

Comment: C19ORF15 Blocking Peptide, catalog no. 33R-2894, is also available for use as a blocking control in assays to test for specificity of this C19ORF15 antibody

Restrictions: For Research Use only

## Handling

---

Format: Lyophilized

Reconstitution: Lyophilized powder. Add distilled water for a 1 mg/mL concentration of C10 RF15 antibody in PBS

Concentration: Lot specific

Buffer: PBS

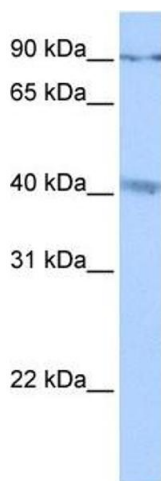
Handling Advice: Avoid repeated freeze/thaw cycles.  
Dilute only prior to immediate use.

Storage: 4 °C/-20 °C

Storage Comment: Store at 2-8 °C for short periods. For longer periods of storage, store at -20 °C.

## Images

---



### Western Blotting

**Image 1.** C19ORF15 antibody used at 0.5 ug/ml to detect target protein.