

Datasheet for ABIN635483
anti-STEAP4 antibody (C-Term)



[Go to Product page](#)

1 Image

Overview

Quantity:	100 µL
Target:	STEAP4
Binding Specificity:	C-Term
Reactivity:	Human
Host:	Rabbit
Clonality:	Polyclonal
Conjugate:	This STEAP4 antibody is un-conjugated
Application:	Western Blotting (WB)

Product Details

Immunogen:	STEAP4 antibody was raised using the C terminal of STEAP4 corresponding to a region with amino acids AFLHVLYTLVIPRIYYVRWRLGNLTVTQAILKKENPFSTSSAWLSDSYVA
Specificity:	STEAP4 antibody was raised against the C terminal of STEAP4
Purification:	Affinity purified

Target Details

Target:	STEAP4
Alternative Name:	STEAP4 (STEAP4 Products)
Background:	Metalloreductase has the ability to reduce both Fe(3+) to Fe(2+) and Cu(2+) to Cu(1+). It uses NAD(+) as acceptor.

Target Details

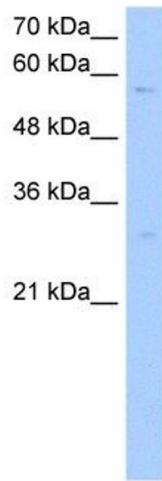
Molecular Weight:	52 kDa (MW of target protein)
Pathways:	Transition Metal Ion Homeostasis

Application Details

Application Notes:	WB: 1 µg/mL Optimal conditions should be determined by the investigator.
Comment:	STEAP4 Blocking Peptide, catalog no. 33R-1165, is also available for use as a blocking control in assays to test for specificity of this STEAP4 antibody
Restrictions:	For Research Use only

Handling

Format:	Lyophilized
Reconstitution:	Lyophilized powder. Add distilled water for a 1 mg/mL concentration of STEAP4 antibody in PBS
Concentration:	Lot specific
Buffer:	PBS
Handling Advice:	Avoid repeated freeze/thaw cycles. Dilute only prior to immediate use.
Storage:	4 °C/-20 °C
Storage Comment:	Store at 2-8 °C for short periods. For longer periods of storage, store at -20 °C.



Western Blotting

Image 1. STEAP4 antibody used at 1 ug/ml to detect target protein.