

Datasheet for ABIN635494
anti-ELFN2 antibody (N-Term)



[Go to Product page](#)

1 Image

Overview

| | |
|----------------------|--------------------------------------|
| Quantity: | 100 µL |
| Target: | ELFN2 |
| Binding Specificity: | N-Term |
| Reactivity: | Human, Mouse, Rat |
| Host: | Rabbit |
| Clonality: | Polyclonal |
| Conjugate: | This ELFN2 antibody is un-conjugated |
| Application: | Western Blotting (WB) |

Product Details

| | |
|---------------|---|
| Immunogen: | ELFN2 antibody was raised using the N terminal of ELFN2 corresponding to a region with amino acids PVSHPTPYSTDAQREPDENSGFNPDEILSVEPPASSTTDASAGPAIKLHH |
| Specificity: | ELFN2 antibody was raised against the N terminal of ELFN2 |
| Purification: | Affinity purified |

Target Details

| | |
|-------------------|---|
| Target: | ELFN2 |
| Alternative Name: | ELFN2 (ELFN2 Products) |
| Background: | ELFN2 is a single-pass membrane protein. It contains 1 fibronectin type-III domain and 5 LRR (leucine-rich) repeats. The exact function of ELFN2 remains unknown. |

Target Details

Molecular Weight: 90 kDa (MW of target protein)

Application Details

Application Notes: WB: 1 µg/mL
Optimal conditions should be determined by the investigator.

Comment: ELFN2 Blocking Peptide, catalog no. 33R-7422, is also available for use as a blocking control in assays to test for specificity of this ELFN2 antibody

Restrictions: For Research Use only

Handling

Format: Lyophilized

Reconstitution: Lyophilized powder. Add distilled water for a 1 mg/mL concentration of ELFN2 antibody in PBS

Concentration: Lot specific

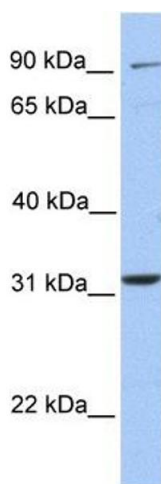
Buffer: PBS

Handling Advice: Avoid repeated freeze/thaw cycles.
Dilute only prior to immediate use.

Storage: 4 °C/-20 °C

Storage Comment: Store at 2-8 °C for short periods. For longer periods of storage, store at -20 °C.

Images



Western Blotting

Image 1. ELFN2 antibody used at 1 µg/ml to detect target protein.