

Datasheet for ABIN635495
anti-TMEM132B antibody (Middle Region)



[Go to Product page](#)

1 Image

Overview

Quantity:	100 µL
Target:	TMEM132B
Binding Specificity:	Middle Region
Reactivity:	Human
Host:	Rabbit
Clonality:	Polyclonal
Conjugate:	This TMEM132B antibody is un-conjugated
Application:	Western Blotting (WB)

Product Details

Immunogen:	TMEM132 B antibody was raised using the middle region of TMEM132 corresponding to a region with amino acids VQEFHHRGTPVGQEESTNKSTTPQSPMEGKNKLLKSGGPDAFTSFPTQGK
Specificity:	TMEM132 B antibody was raised against the middle region of TMEM132
Purification:	Affinity purified

Target Details

Target:	TMEM132B
Alternative Name:	TMEM132B (TMEM132B Products)
Background:	TMEM132B single-pass type I membrane protein. It belongs to the TMEM132 family. The exact function of TMEM132B is not known.

Target Details

Molecular Weight: 119 kDa (MW of target protein)

Application Details

Application Notes: WB: 1 µg/mL
Optimal conditions should be determined by the investigator.

Comment: TMEM132B Blocking Peptide, catalog no. 33R-9746, is also available for use as a blocking control in assays to test for specificity of this TMEM132B antibody

Restrictions: For Research Use only

Handling

Format: Lyophilized

Reconstitution: Lyophilized powder. Add distilled water for a 1 mg/mL concentration of TMEM130 antibody in PBS

Concentration: Lot specific

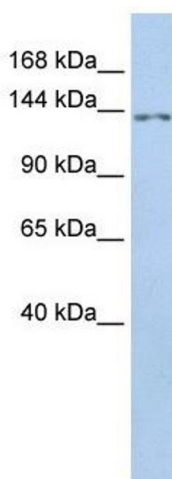
Buffer: PBS

Handling Advice: Avoid repeated freeze/thaw cycles.
Dilute only prior to immediate use.

Storage: 4 °C/-20 °C

Storage Comment: Store at 2-8 °C for short periods. For longer periods of storage, store at -20 °C.

Images



Western Blotting

Image 1. TMEM132B antibody used at 1 ug/ml to detect target protein.