

Datasheet for ABIN635498

**anti-Sphingomyelin Synthase 2 antibody (N-Term)**[Go to Product page](#)**1** Image

## Overview

Quantity:	100 µL
Target:	Sphingomyelin Synthase 2 (SGMS2)
Binding Specificity:	N-Term
Reactivity:	Human, Mouse, Rat
Host:	Rabbit
Clonality:	Polyclonal
Conjugate:	This Sphingomyelin Synthase 2 antibody is un-conjugated
Application:	Western Blotting (WB)

## Product Details

Immunogen:	SGMS2 antibody was raised using the N terminal of SGMS2 corresponding to a region with amino acids KFPLEWWKTGIAFIYAVFNLVLTVMITVWHERVPPKELSPPLDPKFFDY
Specificity:	SGMS2 antibody was raised against the N terminal of SGMS2
Purification:	Affinity purified

## Target Details

Target:	Sphingomyelin Synthase 2 (SGMS2)
Alternative Name:	SGMS2 ( <a href="#">SGMS2 Products</a> )
Background:	SGMS2 is a bidirectional lipid cholinephosphotransferase capable of converting phosphatidylcholine (PC) and ceramide to sphingomyelin (SM) and diacylglycerol (DAG) and vice versa. Direction is dependent on the relative concentrations of DAG and ceramide as

## Target Details

---

phosphocholine acceptors. SGMS2 directly and specifically recognises the choline head group on the substrate. SGMS2 also requires two fatty chains on the choline-P donor molecule in order to be recognised efficiently as a substrate. SGMS2 does not function strictly as a SM synthase.

Molecular Weight: 42 kDa (MW of target protein)

## Application Details

---

Application Notes: WB: 1 µg/mL  
Optimal conditions should be determined by the investigator.

Comment: SGMS2 Blocking Peptide, catalog no. 33R-4377, is also available for use as a blocking control in assays to test for specificity of this SGMS2 antibody

Restrictions: For Research Use only

## Handling

---

Format: Lyophilized

Reconstitution: Lyophilized powder. Add distilled water for a 1 mg/mL concentration of SGMS2 antibody in PBS

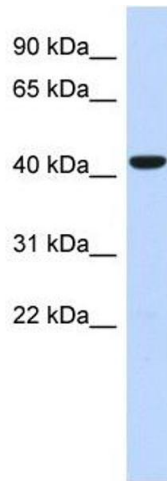
Concentration: Lot specific

Buffer: PBS

Handling Advice: Avoid repeated freeze/thaw cycles.  
Dilute only prior to immediate use.

Storage: 4 °C/-20 °C

Storage Comment: Store at 2-8 °C for short periods. For longer periods of storage, store at -20 °C.



### Western Blotting

**Image 1.** SGMS2 antibody used at 1 ug/ml to detect target protein.