

Datasheet for ABIN635502
anti-INSIG2 antibody (N-Term)



[Go to Product page](#)

1 Image

Overview

Quantity:	100 µL
Target:	INSIG2
Binding Specificity:	N-Term
Reactivity:	Human
Host:	Rabbit
Clonality:	Polyclonal
Conjugate:	This INSIG2 antibody is un-conjugated
Application:	Western Blotting (WB)

Product Details

Immunogen:	INSIG2 antibody was raised using the N terminal of INSIG2 corresponding to a region with amino acids MAEGETESPGPKKCGPYISSVTSQSVNLMIRGVVLFFIGVFLALVLNLLQ
Specificity:	INSIG2 antibody was raised against the N terminal of INSIG2
Purification:	Affinity purified

Target Details

Target:	INSIG2
Alternative Name:	INSIG2 (INSIG2 Products)
Background:	INSIG2 is highly similar to the protein product encoded by gene INSIG1. Both INSIG1 protein and this protein are endoplasmic reticulum proteins that block the processing of sterol regulatory element binding proteins (SREBPs) by binding to SREBP cleavage-activating protein

Target Details

(SCAP), and thus prevent SCAP from escorting SREBPs to the Golgi.

Molecular Weight: 25 kDa (MW of target protein)

Pathways: [ER-Nucleus Signaling](#)

Application Details

Application Notes: WB: 1 µg/mL

Optimal conditions should be determined by the investigator.

Comment: INSIG2 Blocking Peptide, catalog no. 33R-5639, is also available for use as a blocking control in assays to test for specificity of this INSIG2 antibody

Restrictions: For Research Use only

Handling

Format: Lyophilized

Reconstitution: Lyophilized powder. Add distilled water for a 1 mg/mL concentration of INSIG2 antibody in PBS

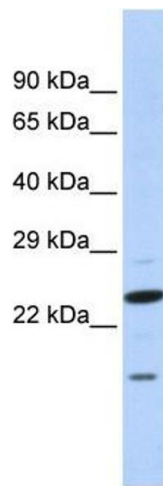
Concentration: Lot specific

Buffer: PBS

Handling Advice: Avoid repeated freeze/thaw cycles.
Dilute only prior to immediate use.

Storage: 4 °C/-20 °C

Storage Comment: Store at 2-8 °C for short periods. For longer periods of storage, store at -20 °C.



Western Blotting

Image 1. INSIG2 antibody used at 1 ug/ml to detect target protein.