

Datasheet for ABIN635505
anti-Claudin 18 antibody (C-Term)



[Go to Product page](#)

1 Image

Overview

Quantity:	100 µL
Target:	Claudin 18 (CLDN18)
Binding Specificity:	C-Term
Reactivity:	Human
Host:	Rabbit
Clonality:	Polyclonal
Conjugate:	This Claudin 18 antibody is un-conjugated
Application:	Western Blotting (WB)

Product Details

Immunogen:	Claudin 18 antibody was raised using the C terminal of CLDN18 corresponding to a region with amino acids PEETNYKAVSYHASGHSVAYKPGGFKASTGFGSNTKNKKIYDGGARTEDE
Specificity:	Claudin 18 antibody was raised against the C terminal of CLDN18
Purification:	Affinity purified

Target Details

Target:	Claudin 18 (CLDN18)
Alternative Name:	Claudin 18 (CLDN18 Products)
Background:	CLDN18 belongs to the large claudin family of proteins, which form tight junction strands in epithelial cells.

Target Details

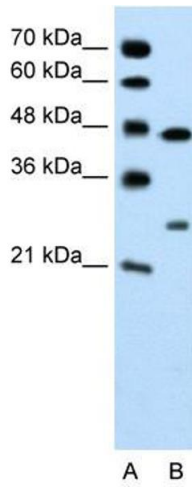
Molecular Weight:	28 kDa (MW of target protein)
Pathways:	Cell-Cell Junction Organization, Hepatitis C

Application Details

Application Notes:	WB: 0.2-1 µg/mL Optimal conditions should be determined by the investigator.
Comment:	Claudin 18 Blocking Peptide, catalog no. 33R-7040, is also available for use as a blocking control in assays to test for specificity of this Claudin 18 antibody
Restrictions:	For Research Use only

Handling

Format:	Lyophilized
Reconstitution:	Lyophilized powder. Add distilled water for a 1 mg/mL concentration of CLDN18 antibody in PBS
Concentration:	Lot specific
Buffer:	PBS
Handling Advice:	Avoid repeated freeze/thaw cycles. Dilute only prior to immediate use.
Storage:	4 °C/-20 °C
Storage Comment:	Store at 2-8 °C for short periods. For longer periods of storage, store at -20 °C.



Western Blotting

Image 1. Western Blot showing Claudin 18 antibody used at a concentration of 1-2 ug/ml to detect its target protein.