

Datasheet for ABIN635507 **anti-GPR6 antibody (N-Term)**



[Go to Product page](#)

1 Image

Overview

Quantity:	100 µL
Target:	GPR6
Binding Specificity:	N-Term
Reactivity:	Human
Host:	Rabbit
Clonality:	Polyclonal
Conjugate:	This GPR6 antibody is un-conjugated
Application:	Western Blotting (WB)

Product Details

Immunogen:	GPR6 antibody was raised using the N terminal of GPR6 corresponding to a region with amino acids NASAASLNSQVWVVAEAAAAAAAAAAGGPDGTGEWGPPAAAAALGAGGGAN
Specificity:	GPR6 antibody was raised against the N terminal of GPR6
Purification:	Affinity purified

Target Details

Target:	GPR6
Alternative Name:	GPR6 (GPR6 Products)
Background:	GPR6 belongs to the G-protein coupled receptor 1 family. It is a receptor for the lysosphingolipid sphingosine 1-phosphate (S1P). S1P is a bioactive lysophospholipid that elicits diverse physiological effect on most types of cells and tissues. This receptor mediates its action by

Target Details

association with G proteins that activate a phosphatidylinositol-calcium second messenger system.

Molecular Weight: 38 kDa (MW of target protein)

Application Details

Application Notes: WB: 1 µg/mL
Optimal conditions should be determined by the investigator.

Comment: GPR6 Blocking Peptide, catalog no. 33R-6644, is also available for use as a blocking control in assays to test for specificity of this GPR6 antibody

Restrictions: For Research Use only

Handling

Format: Lyophilized

Reconstitution: Lyophilized powder. Add distilled water for a 1 mg/mL concentration of GPR6 antibody in PBS

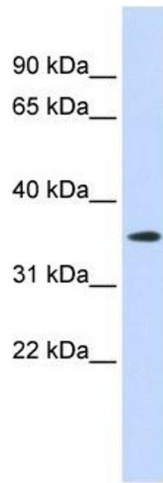
Concentration: Lot specific

Buffer: PBS

Handling Advice: Avoid repeated freeze/thaw cycles.
Dilute only prior to immediate use.

Storage: 4 °C/-20 °C

Storage Comment: Store at 2-8 °C for short periods. For longer periods of storage, store at -20 °C.



Western Blotting

Image 1. GPR6 antibody used at 1 ug/ml to detect target protein.