

Datasheet for ABIN635520 **anti-ERVW-1 antibody (N-Term)**



[Go to Product page](#)

1 Image

Overview

Quantity:	100 µL
Target:	ERVW-1
Binding Specificity:	N-Term
Reactivity:	Human
Host:	Rabbit
Clonality:	Polyclonal
Conjugate:	This ERVW-1 antibody is un-conjugated
Application:	Western Blotting (WB)

Product Details

Immunogen:	ERVWE1 antibody was raised using the N terminal of ERVWE1 corresponding to a region with amino acids TQTGMSDGGGVQDQAREKHVKEVISQLTRVHGTSSPYKGLDLSKLNHETLR
Specificity:	ERVWE1 antibody was raised against the N terminal of ERVWE1
Purification:	Affinity purified

Target Details

Target:	ERVW-1
Alternative Name:	ERVWE1 (ERVW-1 Products)
Background:	ERVWE1 or syncytin, is expressed in the placental syncytiotrophoblast and is involved in fusion of the cytotrophoblast cells to form the syncytial layer of the placenta. The protein has the characteristics of a typical retroviral envelope protein, including a furin cleavage site that

Target Details

separates the surface (SU) and transmembrane (TM) proteins which form a heterodimer. Alternatively spliced transcript variants encoding the same protein have been found for this gene.

Molecular Weight: 24 kDa (MW of target protein)

Application Details

Application Notes: WB: 1 µg/mL
Optimal conditions should be determined by the investigator.

Comment: ERVWE1 Blocking Peptide, catalog no. 33R-9252, is also available for use as a blocking control in assays to test for specificity of this ERVWE1 antibody

Restrictions: For Research Use only

Handling

Format: Lyophilized

Reconstitution: Lyophilized powder. Add distilled water for a 1 mg/mL concentration of ERVWE1 antibody in PBS

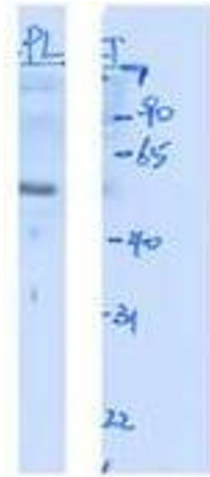
Concentration: Lot specific

Buffer: PBS

Handling Advice: Avoid repeated freeze/thaw cycles.
Dilute only prior to immediate use.

Storage: 4 °C/-20 °C

Storage Comment: Store at 2-8 °C for short periods. For longer periods of storage, store at -20 °C.



Western Blotting

Image 1. ERVWE1 antibody used at 1 ug/ml to detect target protein.