

Datasheet for ABIN635532
anti-MMP23B antibody (Middle Region)



[Go to Product page](#)

1 Image

Overview

| | |
|----------------------|---------------------------------------|
| Quantity: | 100 µL |
| Target: | MMP23B |
| Binding Specificity: | Middle Region |
| Reactivity: | Human, Rat, Mouse |
| Host: | Rabbit |
| Clonality: | Polyclonal |
| Conjugate: | This MMP23B antibody is un-conjugated |
| Application: | Western Blotting (WB) |

Product Details

| | |
|---------------|--|
| Immunogen: | MMP23 B antibody was raised using the middle region of MMP23 corresponding to a region with amino acids QKILHKKGKVYWKDQEPLEFSYPGYLALGEAHLIIANAVNEGTYTCVV |
| Specificity: | MMP23 B antibody was raised against the middle region of MMP23 |
| Purification: | Affinity purified |

Target Details

| | |
|-------------------|--|
| Target: | MMP23B |
| Alternative Name: | MMP23B (MMP23B Products) |
| Background: | MMP23B encodes a member of the matrix metalloproteinase (MMP) family, and it is part of a duplicated region of chromosome 1p36.3. Proteins of the matrix metalloproteinase (MMP) family are involved in the Breakdown of extracellular matrix in normal physiological processes, |

Target Details

such as embryonic development, reproduction, and tissue remodeling, as well as in disease processes, such as arthritis and metastasis.

Molecular Weight: 36 kDa (MW of target protein)

Application Details

Application Notes: WB: 1 µg/mL
Optimal conditions should be determined by the investigator.

Comment: MMP23B Blocking Peptide, catalog no. 33R-7605, is also available for use as a blocking control in assays to test for specificity of this MMP23B antibody

Restrictions: For Research Use only

Handling

Format: Lyophilized

Reconstitution: Lyophilized powder. Add distilled water for a 1 mg/mL concentration of MMP20 antibody in PBS

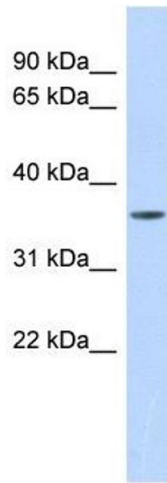
Concentration: Lot specific

Buffer: PBS

Handling Advice: Avoid repeated freeze/thaw cycles.
Dilute only prior to immediate use.

Storage: 4 °C/-20 °C

Storage Comment: Store at 2-8 °C for short periods. For longer periods of storage, store at -20 °C.



Western Blotting

Image 1. MMP23B antibody used at 1 ug/ml to detect target protein.