

Datasheet for ABIN635557

anti-MAN1A2 antibody (Middle Region)[Go to Product page](#)**1** Image

Overview

Quantity:	100 µL
Target:	MAN1A2
Binding Specificity:	Middle Region
Reactivity:	Human, Mouse, Rat
Host:	Rabbit
Clonality:	Polyclonal
Conjugate:	This MAN1A2 antibody is un-conjugated
Application:	Western Blotting (WB)

Product Details

Immunogen:	MAN1 A2 antibody was raised using the middle region of MAN1 2 corresponding to a region with amino acids FALGADGSRADKAGHYLELGAEIARTCHESYDRTALKLGPESFKFDGAVE
Specificity:	MAN1 A2 antibody was raised against the middle region of MAN1 2
Purification:	Affinity purified

Target Details

Target:	MAN1A2
Alternative Name:	MAN1A2 (MAN1A2 Products)
Background:	Alpha-mannosidases function at different stages of N-glycan maturation in mammalian cells.
Molecular Weight:	73 kDa (MW of target protein)

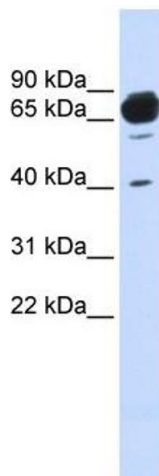
Application Details

Application Notes:	WB: 1 µg/mL Optimal conditions should be determined by the investigator.
Comment:	MAN1A2 Blocking Peptide, catalog no. 33R-2844, is also available for use as a blocking control in assays to test for specificity of this MAN1A2 antibody
Restrictions:	For Research Use only

Handling

Format:	Lyophilized
Reconstitution:	Lyophilized powder. Add distilled water for a 1 mg/mL concentration of MAN0 2 antibody in PBS
Concentration:	Lot specific
Buffer:	PBS
Handling Advice:	Avoid repeated freeze/thaw cycles. Dilute only prior to immediate use.
Storage:	4 °C/-20 °C
Storage Comment:	Store at 2-8 °C for short periods. For longer periods of storage, store at -20 °C.

Images



Western Blotting

Image 1. MAN1A2 antibody used at 1 ug/ml to detect target protein.