

Datasheet for ABIN635559  
**anti-PIPOX antibody (C-Term)**



[Go to Product page](#)

1 Image

## Overview

Quantity:	100 µL
Target:	PIPOX
Binding Specificity:	C-Term
Reactivity:	Human, Mouse, Rat, Dog
Host:	Rabbit
Clonality:	Polyclonal
Conjugate:	This PIPOX antibody is un-conjugated
Application:	Western Blotting (WB)

## Product Details

Immunogen:	PIPOX antibody was raised using the C terminal of PIPOX corresponding to a region with amino acids FVRDHLPLDKPEPAVIESCMYTNTPDEQFILDRHPKYDNIVIGAGFSGHG
Specificity:	PIPOX antibody was raised against the C terminal of PIPOX
Purification:	Affinity purified

## Target Details

Target:	PIPOX
Alternative Name:	PIPOX ( <a href="#">PIPOX Products</a> )
Background:	PIPOX metabolizes sarcosine, L-pipecolic acid and L-proline.
Molecular Weight:	43 kDa (MW of target protein)

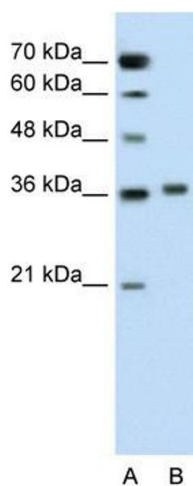
## Application Details

Application Notes:	WB: 0.25 µg/mL Optimal conditions should be determined by the investigator.
Comment:	PIPOX Blocking Peptide, catalog no. 33R-3119, is also available for use as a blocking control in assays to test for specificity of this PIPOX antibody
Restrictions:	For Research Use only

## Handling

Format:	Lyophilized
Reconstitution:	Lyophilized powder. Add distilled water for a 1 mg/mL concentration of PIPOX antibody in PBS
Concentration:	Lot specific
Buffer:	PBS
Handling Advice:	Avoid repeated freeze/thaw cycles. Dilute only prior to immediate use.
Storage:	4 °C/-20 °C
Storage Comment:	Store at 2-8 °C for short periods. For longer periods of storage, store at -20 °C.

## Images



### Western Blotting

**Image 1.** PIPOX antibody used at 0.25 µg/ml to detect target protein.