

Datasheet for ABIN635560 **anti-FIBCD1 antibody (C-Term)**



[Go to Product page](#)

1 Image

Overview

Quantity:	100 µL
Target:	FIBCD1
Binding Specificity:	C-Term
Reactivity:	Human, Mouse, Rat
Host:	Rabbit
Clonality:	Polyclonal
Conjugate:	This FIBCD1 antibody is un-conjugated
Application:	Western Blotting (WB)

Product Details

Immunogen:	FIBCD1 antibody was raised using the C terminal of FIBCD1 corresponding to a region with amino acids DGYPLTVADYSGTAGDSLKHSRMRFTTKDRSDHSENNCAAFYRGAWWY
Specificity:	FIBCD1 antibody was raised against the C terminal of FIBCD1
Purification:	Affinity purified

Target Details

Target:	FIBCD1
Alternative Name:	FIBCD1 (FIBCD1 Products)
Background:	FIBCD1 is a single-pass membrane protein. It contains 1 fibrinogen C-terminal domain. The exact function of FIBCD1 remains unknown.

Target Details

Molecular Weight: 51 kDa (MW of target protein)

Application Details

Application Notes: WB: 1 µg/mL
Optimal conditions should be determined by the investigator.

Comment: FIBCD1 Blocking Peptide, catalog no. 33R-1972, is also available for use as a blocking control in assays to test for specificity of this FIBCD1 antibody

Restrictions: For Research Use only

Handling

Format: Lyophilized

Reconstitution: Lyophilized powder. Add distilled water for a 1 mg/mL concentration of FIBCD1 antibody in PBS

Concentration: Lot specific

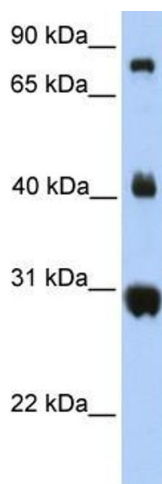
Buffer: PBS

Handling Advice: Avoid repeated freeze/thaw cycles.
Dilute only prior to immediate use.

Storage: 4 °C/-20 °C

Storage Comment: Store at 2-8 °C for short periods. For longer periods of storage, store at -20 °C.

Images



Western Blotting

Image 1. FIBCD1 antibody used at 1 ug/ml to detect target protein.