

Datasheet for ABIN635568 **anti-PCDH15 antibody (N-Term)**



[Go to Product page](#)

1 Image

Overview

Quantity:	100 µL
Target:	PCDH15
Binding Specificity:	N-Term
Reactivity:	Human, Mouse, Rat
Host:	Rabbit
Clonality:	Polyclonal
Conjugate:	This PCDH15 antibody is un-conjugated
Application:	Western Blotting (WB)

Product Details

Immunogen:	PCDH15 antibody was raised using the N terminal of PCDH15 corresponding to a region with amino acids HSIWVQVCINKKVGTIYHEVRIVRDRNDNSPTFKHESYYATVNELTP
Specificity:	PCDH15 antibody was raised against the N terminal of PCDH15
Purification:	Affinity purified

Target Details

Target:	PCDH15
Alternative Name:	PCDH15 (PCDH15 Products)
Background:	PCDH15 is a member of the cadherin superfamily. Family members encode integral membrane proteins that mediate calcium-dependent cell-cell adhesion. PCDH15 consists of a signal peptide, 11 extracellular calcium-binding domains, a transmembrane domain and a unique

Target Details

cytoplasmic domain. It plays an essential role in maintenance of normal retinal and cochlear function. Mutations in this gene have been associated with hearing loss, which is consistent with its location at the Usher syndrome type 1F (USH1F) critical region on chromosome 10.

Molecular Weight: 80 kDa (MW of target protein)

Pathways: [Sensory Perception of Sound](#)

Application Details

Application Notes: WB: 1 µg/mL
Optimal conditions should be determined by the investigator.

Comment: PCDH15 Blocking Peptide, catalog no. 33R-3853, is also available for use as a blocking control in assays to test for specificity of this PCDH15 antibody

Restrictions: For Research Use only

Handling

Format: Lyophilized

Reconstitution: Lyophilized powder. Add distilled water for a 1 mg/mL concentration of PCDH15 antibody in PBS

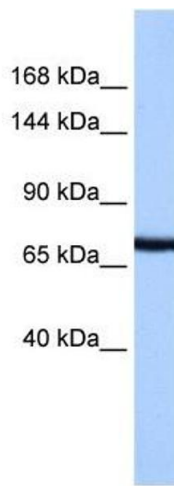
Concentration: Lot specific

Buffer: PBS

Handling Advice: Avoid repeated freeze/thaw cycles.
Dilute only prior to immediate use.

Storage: 4 °C/-20 °C

Storage Comment: Store at 2-8 °C for short periods. For longer periods of storage, store at -20 °C.



Western Blotting

Image 1. PCDH15 antibody used at 1 ug/ml to detect target protein.