

## Datasheet for ABIN635575 **anti-PLP1 antibody (Middle Region)**



[Go to Product page](#)

### 1 Image

#### Overview

Quantity:	100 µL
Target:	PLP1
Binding Specificity:	Middle Region
Reactivity:	Human, Rat, Mouse, Dog
Host:	Rabbit
Clonality:	Polyclonal
Conjugate:	This PLP1 antibody is un-conjugated
Application:	Western Blotting (WB)

#### Product Details

Immunogen:	PLP1 antibody was raised using the middle region of PLP1 corresponding to a region with amino acids IYGTASFFFLYGALLLAEGFYTTGAVRQIFGDYKTTICGKGLSATVTGGQ
Specificity:	PLP1 antibody was raised against the middle region of PLP1
Purification:	Affinity purified

#### Target Details

Target:	PLP1
Alternative Name:	PLP1 ( <a href="#">PLP1 Products</a> )
Background:	PLP1 is a transmembrane proteolipid protein that is the predominant myelin protein present in the central nervous system. It may play a role in the compaction, stabilization, and maintenance of myelin sheaths, as well as in oligodendrocyte development and axonal survival. Mutations in

## Target Details

this gene cause X-linked Pelizaeus-Merzbacher disease and spastic paraplegia type 2.

Molecular Weight: 30 kDa (MW of target protein)

## Application Details

Application Notes: WB: 1 µg/mL

Optimal conditions should be determined by the investigator.

Comment: PLP1 Blocking Peptide, catalog no. 33R-4219, is also available for use as a blocking control in assays to test for specificity of this PLP1 antibody

Restrictions: For Research Use only

## Handling

Format: Lyophilized

Reconstitution: Lyophilized powder. Add distilled water for a 1 mg/mL concentration of PLP1 antibody in PBS

Concentration: Lot specific

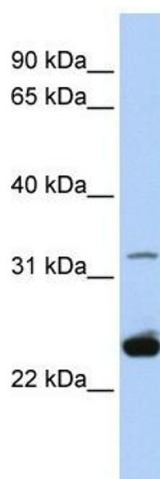
Buffer: PBS

Handling Advice: Avoid repeated freeze/thaw cycles.  
Dilute only prior to immediate use.

Storage: 4 °C/-20 °C

Storage Comment: Store at 2-8 °C for short periods. For longer periods of storage, store at -20 °C.

## Images



### Western Blotting

**Image 1.** PLP1 antibody used at 1 ug/ml to detect target protein.