

## Datasheet for ABIN635589 **anti-TECR antibody (Middle Region)**



[Go to Product page](#)

### 1 Image

#### Overview

Quantity:	100 µL
Target:	TECR
Binding Specificity:	Middle Region
Reactivity:	Human, Mouse, Rat
Host:	Rabbit
Clonality:	Polyclonal
Conjugate:	This TECR antibody is un-conjugated
Application:	Western Blotting (WB)

#### Product Details

Immunogen:	GPSN2 antibody was raised using the middle region of GPSN2 corresponding to a region with amino acids PFIYGHKYDFTSSRHTVVHLACICHSFHYIKRLLLETLFVHRFSHGTMPLR
Specificity:	GPSN2 antibody was raised against the middle region of GPSN2
Purification:	Affinity purified

#### Target Details

Target:	TECR
Alternative Name:	GPSN2 ( <a href="#">TECR Products</a> )
Background:	Microsomal long and very long chain fatty acid elongation uses malonyl-CoA as the 2-carbon donor and consists of 4 sequential reactions. GPSN2 catalyzes the final step, reducing trans-2,3-enoyl-CoA to saturated acyl-CoA.

## Target Details

---

Molecular Weight: 36 kDa (MW of target protein)

## Application Details

---

Application Notes: WB: 1 µg/mL  
Optimal conditions should be determined by the investigator.

Comment: GPSN2 Blocking Peptide, catalog no. 33R-7077, is also available for use as a blocking control in assays to test for specificity of this GPSN2 antibody

Restrictions: For Research Use only

## Handling

---

Format: Lyophilized

Reconstitution: Lyophilized powder. Add distilled water for a 1 mg/mL concentration of GPSN2 antibody in PBS

Concentration: Lot specific

Buffer: PBS

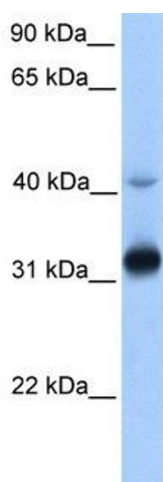
Handling Advice: Avoid repeated freeze/thaw cycles.  
Dilute only prior to immediate use.

Storage: 4 °C/-20 °C

Storage Comment: Store at 2-8 °C for short periods. For longer periods of storage, store at -20 °C.

## Images

---



### Western Blotting

**Image 1.** GPSN2 antibody used at 1 ug/ml to detect target protein.