

Datasheet for ABIN635597
anti-PILRA antibody (N-Term)



[Go to Product page](#)

1 Image

Overview

Quantity:	100 µL
Target:	PILRA
Binding Specificity:	N-Term
Reactivity:	Human
Host:	Rabbit
Clonality:	Polyclonal
Conjugate:	This PILRA antibody is un-conjugated
Application:	Western Blotting (WB)

Product Details

Immunogen:	PILRA antibody was raised using the N terminal of PILRA corresponding to a region with amino acids IPFSFYYPWELATAPDVRISWRRGHFHRQSFYSTRPPSIHKDYVNRLFLN
Specificity:	PILRA antibody was raised against the N terminal of PILRA
Purification:	Affinity purified

Target Details

Target:	PILRA
Alternative Name:	PILRA (PILRA Products)
Background:	Cell signaling pathways rely on a dynamic interaction between activating and inhibiting processes. SHP-1-mediated dephosphorylation of protein tyrosine residues is central to the regulation of several cell signaling pathways. Two types of inhibitory receptor superfamily

Target Details

members are immunoreceptor tyrosine-based inhibitory motif (ITIM)-bearing receptors and their non-ITIM-bearing, activating counterparts. Control of cell signaling via SHP-1 is thought to occur through a balance between PILRalpha-mediated inhibition and PILRbeta-mediated activation. This particular gene encodes the ITIM-bearing member of the receptor pair, which functions in the inhibitory role.

Molecular Weight: 18 kDa (MW of target protein)

Application Details

Application Notes: WB: 0.5 µg/mL
Optimal conditions should be determined by the investigator.

Comment: PILRA Blocking Peptide, catalog no. 33R-4090, is also available for use as a blocking control in assays to test for specificity of this PILRA antibody

Restrictions: For Research Use only

Handling

Format: Lyophilized

Reconstitution: Lyophilized powder. Add distilled water for a 1 mg/mL concentration of PILRA antibody in PBS

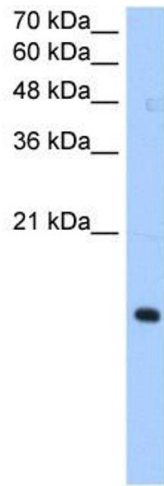
Concentration: Lot specific

Buffer: PBS

Handling Advice: Avoid repeated freeze/thaw cycles.
Dilute only prior to immediate use.

Storage: 4 °C/-20 °C

Storage Comment: Store at 2-8 °C for short periods. For longer periods of storage, store at -20 °C.



Western Blotting

Image 1. PILRA antibody used at 0.5 ug/ml to detect target protein.