

Datasheet for ABIN635598 **anti-JAM3 antibody (N-Term)**



[Go to Product page](#)

1 Image

Overview

Quantity:	100 µL
Target:	JAM3
Binding Specificity:	N-Term
Reactivity:	Human, Mouse
Host:	Rabbit
Clonality:	Polyclonal
Conjugate:	This JAM3 antibody is un-conjugated
Application:	Western Blotting (WB)

Product Details

Immunogen:	JAM3 antibody was raised using the N terminal of JAM3 corresponding to a region with amino acids SSNRTPVVQEFESVELSCIITDSQTS DPRIEWKKIQDEQTTYVFFDNKIQ
Specificity:	JAM3 antibody was raised against the N terminal of JAM3
Purification:	Affinity purified

Target Details

Target:	JAM3
Alternative Name:	JAM3 (JAM3 Products)
Background:	Tight junctions represent one mode of cell-to-cell adhesion in epithelial or endothelial cell sheets, forming continuous seals around cells and serving as a physical barrier to prevent solutes and water from passing freely through the paracellular space. JAM3, one member of

Target Details

the immunoglobulin superfamily, is localized in the tight junctions between high endothelial cells. Unlike other proteins in this family, this protein is unable to adhere to leukocyte cell lines and only forms weak homotypic interactions. JAM3 is a member of the junctional adhesion molecule protein family and acts as a receptor for another member of this family.

Molecular Weight: 28 kDa (MW of target protein)

Application Details

Application Notes: WB: 1 µg/mL
Optimal conditions should be determined by the investigator.

Comment: JAM3 Blocking Peptide, catalog no. 33R-8834, is also available for use as a blocking control in assays to test for specificity of this JAM3 antibody

Restrictions: For Research Use only

Handling

Format: Lyophilized

Reconstitution: Lyophilized powder. Add distilled water for a 1 mg/mL concentration of JAM3 antibody in PBS

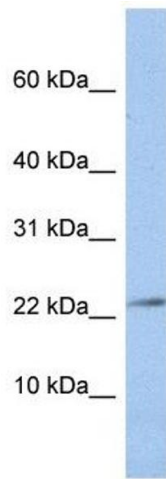
Concentration: Lot specific

Buffer: PBS

Handling Advice: Avoid repeated freeze/thaw cycles.
Dilute only prior to immediate use.

Storage: 4 °C/-20 °C

Storage Comment: Store at 2-8 °C for short periods. For longer periods of storage, store at -20 °C.



Western Blotting

Image 1. JAM3 antibody used at 1 ug/ml to detect target protein.