

Datasheet for ABIN635601
anti-Cytochrome b antibody (N-Term)



[Go to Product page](#)

1 Image

Overview

Quantity:	100 µL
Target:	Cytochrome b (MT-CYB)
Binding Specificity:	N-Term
Reactivity:	Human
Host:	Rabbit
Clonality:	Polyclonal
Conjugate:	This Cytochrome b antibody is un-conjugated
Application:	Western Blotting (WB)

Product Details

Immunogen:	CYTB antibody was raised using the N terminal of CYTB corresponding to a region with amino acids TPMRKINPLMKLINHSFIDLPTPSNISAWWNFGSLLGACLILQITGLFL
Specificity:	CYTB antibody was raised against the N terminal of CYTB
Purification:	Affinity purified

Target Details

Target:	Cytochrome b (MT-CYB)
Alternative Name:	CYTB (MT-CYB Products)
Background:	CYTB belongs to the cytochrome b family. It is a component of the ubiquinol-cytochrome c reductase complex (complex III or cytochrome b-c1 complex), which is a respiratory chain that generates an electrochemical potential coupled to ATP synthesis.

Target Details

Molecular Weight: 42 kDa (MW of target protein)

Pathways: [Proton Transport](#)

Application Details

Application Notes: WB: 1 µg/mL
Optimal conditions should be determined by the investigator.

Comment: CYTB Blocking Peptide, catalog no. 33R-9225, is also available for use as a blocking control in assays to test for specificity of this CYTB antibody

Restrictions: For Research Use only

Handling

Format: Lyophilized

Reconstitution: Lyophilized powder. Add distilled water for a 1 mg/mL concentration of CYTB antibody in PBS

Concentration: Lot specific

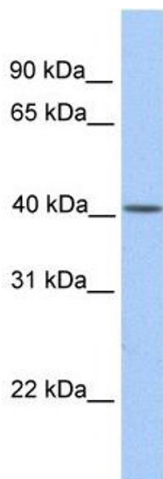
Buffer: PBS

Handling Advice: Avoid repeated freeze/thaw cycles.
Dilute only prior to immediate use.

Storage: 4 °C/-20 °C

Storage Comment: Store at 2-8 °C for short periods. For longer periods of storage, store at -20 °C.

Images



Western Blotting

Image 1. CYTB antibody used at 1 µg/ml to detect target protein.