

Datasheet for ABIN635610
anti-SLC38A3 antibody (N-Term)



[Go to Product page](#)

1 Image

Overview

Quantity:	100 µL
Target:	SLC38A3
Binding Specificity:	N-Term
Reactivity:	Human, Mouse
Host:	Rabbit
Clonality:	Polyclonal
Conjugate:	This SLC38A3 antibody is un-conjugated
Application:	Western Blotting (WB)

Product Details

Immunogen:	SLC38 A3 antibody was raised using the N terminal of SLC38 3 corresponding to a region with amino acids GNQRVEDPARSCMEGKSFLQKSPSKEPHFTDFEGKTSFGMSVFNLSNAIM
Specificity:	SLC38 A3 antibody was raised against the N terminal of SLC38 3
Purification:	Affinity purified

Target Details

Target:	SLC38A3
Alternative Name:	SLC38A3 (SLC38A3 Products)
Background:	As a sodium-dependent amino acid/proton antiporter, SLC38A3 mediates electrogenic cotransport of glutamine and sodium ions in exchange for protons. It also recognises histidine, asparagine and alanine. It may mediate amino acid transport in either direction under

Target Details

physiological conditions and play a role in nitrogen metabolism and synaptic transmission.

Molecular Weight: 56 kDa (MW of target protein)

Application Details

Application Notes: WB: 1 µg/mL
Optimal conditions should be determined by the investigator.

Comment: SLC38A3 Blocking Peptide, catalog no. 33R-3456, is also available for use as a blocking control in assays to test for specificity of this SLC38A3 antibody

Restrictions: For Research Use only

Handling

Format: Lyophilized

Reconstitution: Lyophilized powder. Add distilled water for a 1 mg/mL concentration of SLC30 3 antibody in PBS

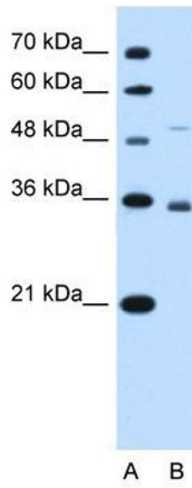
Concentration: Lot specific

Buffer: PBS

Handling Advice: Avoid repeated freeze/thaw cycles.
Dilute only prior to immediate use.

Storage: 4 °C/-20 °C

Storage Comment: Store at 2-8 °C for short periods. For longer periods of storage, store at -20 °C.



Western Blotting

Image 1. SLC38A3 antibody used at 1 ug/ml to detect target protein.