

Datasheet for ABIN635614  
**anti-SLC26A4 antibody (Middle Region)**



[Go to Product page](#)

1 Image

## Overview

Quantity:	100 µL
Target:	SLC26A4
Binding Specificity:	Middle Region
Reactivity:	Human, Mouse
Host:	Rabbit
Clonality:	Polyclonal
Conjugate:	This SLC26A4 antibody is un-conjugated
Application:	Western Blotting (WB)

## Product Details

Immunogen:	SLC26 A4 antibody was raised using the middle region of SLC26 4 corresponding to a region with amino acids ELNDRFRHKIPVPIPIEVIVTIATAISYGANLEKNYNAGIVKSIPRGFL
Specificity:	SLC26 A4 antibody was raised against the middle region of SLC26 4
Purification:	Affinity purified

## Target Details

Target:	SLC26A4
Alternative Name:	SLC26A4 ( <a href="#">SLC26A4 Products</a> )
Background:	Mutations in this gene are associated with Pendred syndrome, the most common form of syndromic deafness, an autosomal-recessive disease. It is highly homologous to the SLC26A3 gene.

## Target Details

---

Molecular Weight:	86 kDa (MW of target protein)
Pathways:	<a href="#">Thyroid Hormone Synthesis</a> , <a href="#">Sensory Perception of Sound</a>

## Application Details

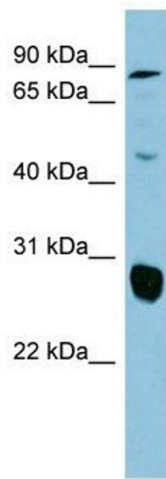
---

Application Notes:	WB: 1 µg/mL Optimal conditions should be determined by the investigator.
Comment:	SLC26A4 Blocking Peptide, catalog no. 33R-2563, is also available for use as a blocking control in assays to test for specificity of this SLC26A4 antibody
Restrictions:	For Research Use only

## Handling

---

Format:	Lyophilized
Reconstitution:	Lyophilized powder. Add distilled water for a 1 mg/mL concentration of SLC20 4 antibody in PBS
Concentration:	Lot specific
Buffer:	PBS
Handling Advice:	Avoid repeated freeze/thaw cycles. Dilute only prior to immediate use.
Storage:	4 °C/-20 °C
Storage Comment:	Store at 2-8 °C for short periods. For longer periods of storage, store at -20 °C.



### Western Blotting

**Image 1.** SLC26A4 antibody used at 1 ug/ml to detect target protein.