

Datasheet for ABIN635615 **anti-CLMN antibody**



[Go to Product page](#)

1 Image

Overview

| | |
|--------------|-------------------------------------|
| Quantity: | 100 µL |
| Target: | CLMN |
| Reactivity: | Human, Mouse, Rat |
| Host: | Rabbit |
| Clonality: | Polyclonal |
| Conjugate: | This CLMN antibody is un-conjugated |
| Application: | Western Blotting (WB) |

Product Details

| | |
|---------------|--|
| Immunogen: | Calmin antibody was raised using a synthetic peptide corresponding to a region with amino acids SPSSSLSPGSGGTDSDSSFPPTAERSVAISVKDQRKAIKALLAWVQRK |
| Purification: | Affinity purified |

Target Details

| | |
|-------------------|--|
| Target: | CLMN |
| Alternative Name: | Calmin (CLMN Products) |
| Background: | CLMN is a single-pass type IV membrane protein. It contains 1 actin-binding domain and 2 CH (calponin-homology) domains. The exact function of CLMN remains unknown. |
| Molecular Weight: | 110 kDa (MW of target protein) |

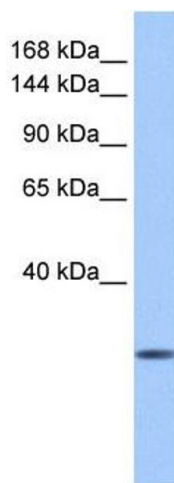
Application Details

| | |
|--------------------|--|
| Application Notes: | WB: 1 µg/mL Optimal conditions should be determined by the investigator. |
| Comment: | Calmin Blocking Peptide, catalog no. 33R-8697, is also available for use as a blocking control in assays to test for specificity of this Calmin antibody |
| Restrictions: | For Research Use only |

Handling

| | |
|------------------|---|
| Format: | Lyophilized |
| Reconstitution: | Lyophilized powder. Add distilled water for a 1 mg/mL concentration of CLMN antibody in PBS |
| Concentration: | Lot specific |
| Buffer: | PBS |
| Handling Advice: | Avoid repeated freeze/thaw cycles. |
| Storage: | 4 °C/-20 °C |
| Storage Comment: | Store at 2-8 °C for short periods. For longer periods of storage, store at -20 °C. |

Images



Western Blotting

Image 1. Calmin antibody used at 1 µg/ml to detect target protein.