

Datasheet for ABIN635618 **anti-POPDC2 antibody (Middle Region)**



[Go to Product page](#)

1 Image

Overview

Quantity:	100 µL
Target:	POPDC2
Binding Specificity:	Middle Region
Reactivity:	Human, Mouse, Rat
Host:	Rabbit
Clonality:	Polyclonal
Conjugate:	This POPDC2 antibody is un-conjugated
Application:	Western Blotting (WB)

Product Details

Immunogen:	POPDC2 antibody was raised using the middle region of POPDC2 corresponding to a region with amino acids SLHLLLTKERYISCLFSALLGYDISEKLYTLNDKLFKFKGLRFDIRLPSL
Specificity:	POPDC2 antibody was raised against the middle region of POPDC2
Purification:	Affinity purified

Target Details

Target:	POPDC2
Alternative Name:	POPDC2 (POPDC2 Products)
Background:	POPDC2 is a member of the POP family of proteins which contain three putative transmembrane domains. This membrane associated protein is predominantly expressed in skeletal and cardiac muscle, and may have an important function in these tissues.

Target Details

Molecular Weight: 40 kDa (MW of target protein)

Application Details

Application Notes: WB: 1 µg/mL
Optimal conditions should be determined by the investigator.

Comment: POPDC2 Blocking Peptide, catalog no. 33R-8590, is also available for use as a blocking control in assays to test for specificity of this POPDC2 antibody

Restrictions: For Research Use only

Handling

Format: Lyophilized

Reconstitution: Lyophilized powder. Add distilled water for a 1 mg/mL concentration of POPDC2 antibody in PBS

Concentration: Lot specific

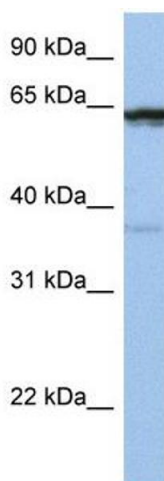
Buffer: PBS

Handling Advice: Avoid repeated freeze/thaw cycles.
Dilute only prior to immediate use.

Storage: 4 °C/-20 °C

Storage Comment: Store at 2-8 °C for short periods. For longer periods of storage, store at -20 °C.

Images



Western Blotting

Image 1. POPDC2 antibody used at 1 µg/ml to detect target protein.