

Datasheet for ABIN635620
anti-ZDHHC14 antibody (N-Term)



[Go to Product page](#)

1 Image

Overview

| | |
|----------------------|--|
| Quantity: | 100 µL |
| Target: | ZDHHC14 |
| Binding Specificity: | N-Term |
| Reactivity: | Human, Mouse, Rat |
| Host: | Rabbit |
| Clonality: | Polyclonal |
| Conjugate: | This ZDHHC14 antibody is un-conjugated |
| Application: | Western Blotting (WB) |

Product Details

| | |
|---------------|--|
| Immunogen: | ZDHHC14 antibody was raised using the N terminal of ZDHHC14 corresponding to a region with amino acids TLLRTSFSDPGVLP RATPDEAADLERQIDIANGTSSGGYRPPPRTKEVII |
| Specificity: | ZDHHC14 antibody was raised against the N terminal of ZDHHC14 |
| Purification: | Affinity purified |

Target Details

| | |
|-------------------|--|
| Target: | ZDHHC14 |
| Alternative Name: | ZDHHC14 (ZDHHC14 Products) |
| Background: | ZDHHC14 belongs to the DHHC palmitoyltransferase family, ERF2/ZDHHC9 subfamily. It contains 1 DHHC-type zinc finger. It is a multi-pass membrane protein. The function of ZDHHC14 remains unknown. |

Target Details

Molecular Weight: 53 kDa (MW of target protein)

Application Details

Application Notes: WB: 1 µg/mL
Optimal conditions should be determined by the investigator.

Comment: ZDHHC14 Blocking Peptide, catalog no. 33R-9176, is also available for use as a blocking control in assays to test for specificity of this ZDHHC14 antibody

Restrictions: For Research Use only

Handling

Format: Lyophilized

Reconstitution: Lyophilized powder. Add distilled water for a 1 mg/mL concentration of ZDHHC14 antibody in PBS

Concentration: Lot specific

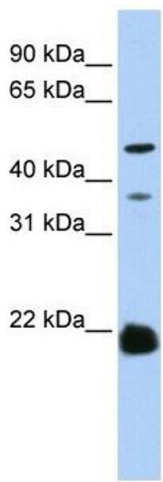
Buffer: PBS

Handling Advice: Avoid repeated freeze/thaw cycles.
Dilute only prior to immediate use.

Storage: 4 °C/-20 °C

Storage Comment: Store at 2-8 °C for short periods. For longer periods of storage, store at -20 °C.

Images



Western Blotting

Image 1. ZDHHC14 antibody used at 1 ug/ml to detect target protein.